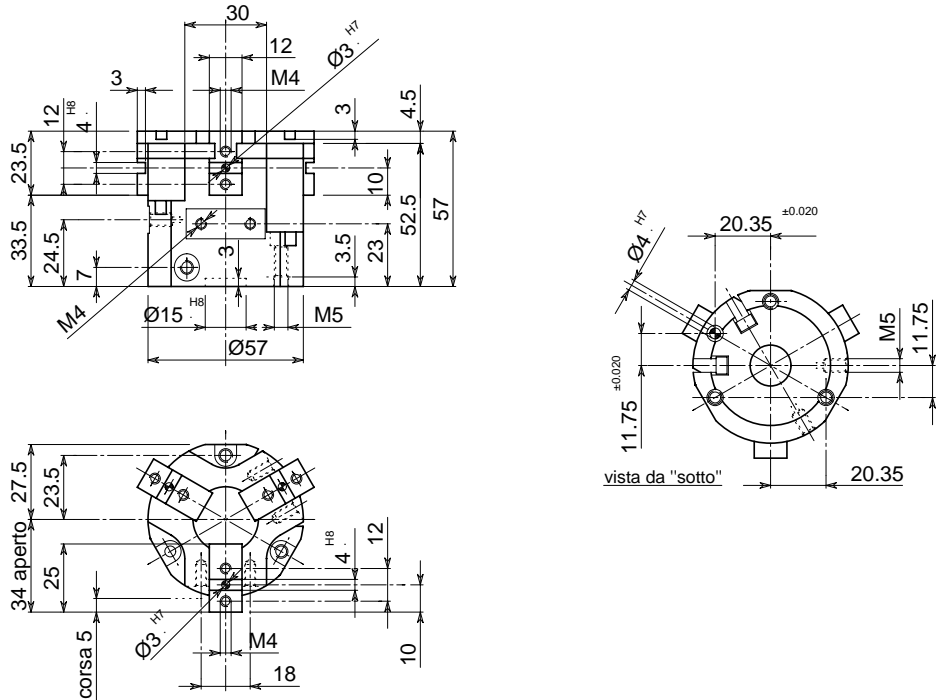


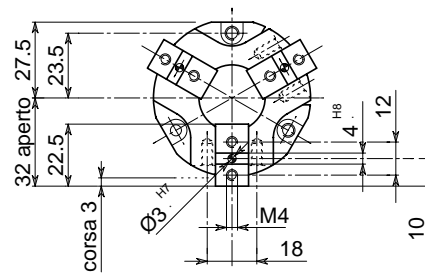


- **ORGANO DI PRESA A CORSA PARALLELA A TRE GRIFFE**
- **Three-jaw parallel gripper**
- **Drei-finger Parallelgreifer**
- **Pince de préhension à course parallèle, à trois griffes**

• Disegno OPE 60-3 • Drawing OPE 60-3 • Zeichnung OPE 60-3 • Dessin OPE 60-3

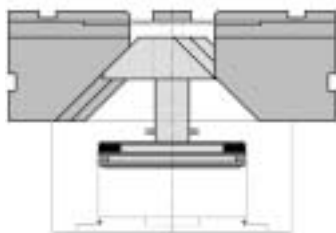


• Versione OPE 60-3 S • Version OPE 60-3 S • Ausführung OPE 60-3 S • Version OPE 60-3 S

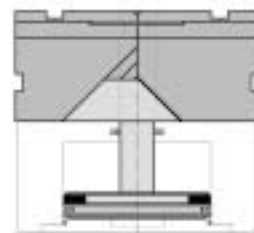


• Le dimensioni sono indicative e suscettibili di variazioni per migliorie tecniche. Ci riserviamo di apportare modifiche senza preavviso • All dimensions are indicative and subject to variation for technical upgrading. We reserve the right to make alterations without prior notification • Die Maßangaben sind indikativ und können sich bei technischen Verbesserungen ändern. Wir behalten uns vor, ohne vorherige Benachrichtigung Änderungen vorzunehmen • Les dimensions sont fournies à titre indicatif, elles peuvent subir des variations pour cause d'améliorations techniques. Nous nous réservons le droit d'apporter des modifications sans préavis.

• SCHEMA DI FUNZIONAMENTO • OPERATIONAL DIAGRAM
• BETRIEBSSCHEMA • SCHÉMA DE FONCTIONNEMENT



Aperto
Open
Geöffnet
Ouvert



Chiuso
Closed
Geschlossen
Fermé

OPE 205-3
OPE 205-3 S

OPE 175-3
OPE 175-3 S

OPE 125-3
OPE 125-3 S

OPE 110-3
OPE 110-3 S

OPE 105-3
OPE 105-3 S

OPE 90-3
OPE 90-3 S

OPE 80-3
OPE 80-3 S

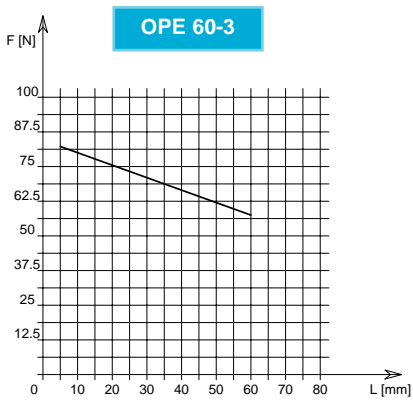
OPE 65-3
OPE 65-3 S

OPE 60-3
OPE 60-3 S



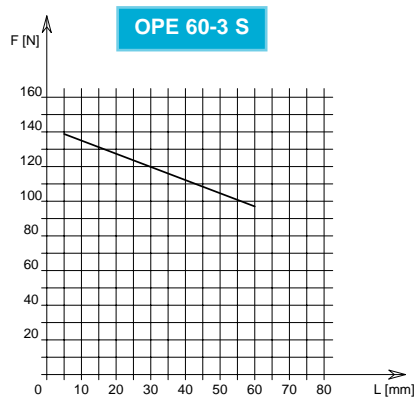
- **ORGANO DI PRESA A CORSA PARALLELA A TRE GRIFFE**
- **Three-jaw parallel gripper**
- **Drei-finger Parallelgreifer**
- **Pince de préhension à course parallèle, à trois griffes**

DIAGRAMMA FORZA DI CHIUSURA
CLAMPING FORCE DIAGRAM • DIAGRAM SCHLIEßKRAFT
DIAGRAMME DE LA FORCE DE FERMETURE



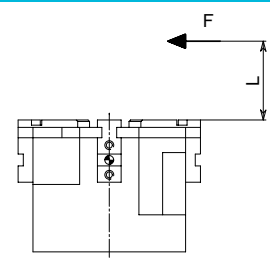
F = Forza di chiusura reale per griffa
 L = Distanza di rilevamento

F = True clamping force per jaw
 L = Reading distance



F = Reelle Schließkraft pro Greiffinger
 L = Messungsabstand

F = Force de fermeture réelle par griffe
 L = Distance de lecture



P = 6 bar

Valori nei dati tecnici rilevati alla distanza L = 10 mm • Technical specification values read at a distance L = 10 mm

• Werte der technischen Daten auf Distanz aufgenommen L = 10 mm • Valeurs des données techniques relevées à la distance L = 10 mm

DATI TECNICI

| | | |
|--|--------------------|--------------------|
| Corsa per griffa | .5 mm | .3 mm |
| Corsa pistone | .6 mm | .6 mm |
| Volume aria per doppia corsa | .8 cm ³ | .8 cm ³ |
| Forza teorica di chiusura per griffa a 6 bar | .149 N | .246 N |
| Forza reale di chiusura per griffa a 6 bar | .80 N | .135 N |
| Forza teorica di apertura per griffa a 6 bar | .167 N | .277 N |
| Forza reale di apertura per griffa a 6 bar | .90 N | .152 N |
| Pressione di esercizio | .2-12 bar | .2-12 bar |
| Ripetibilità | ±0.05 mm | ±0.05 mm |
| Peso | .036 Kg | .03 Kg |
| Temperatura di esercizio | .5-60 °C | .5-60 °C |
| Codice articolo | .OE870PRE | .OE670PRS |

SPECIFICATIONS

| | | |
|---|--------------------|--------------------|
| Stroke per jaw | .5 mm | .3 mm |
| Piston stroke | .6 mm | .6 mm |
| Dual stroke air volume | .8 cm ³ | .8 cm ³ |
| Theoretical clamping force per jaw at 6 bar | .149 N | .246 N |
| Actual clamping force per jaw at 6 bar | .80 N | .135 N |
| Theoretical opening force per jaw at 6 bar | .167 N | .277 N |
| Actual opening force per jaw at 6 bar | .90 N | .152 N |
| Working pressure | .2-12 bar | .2-12 bar |
| Reproducibility | ±0.05 mm | ±0.05 mm |
| Weight | .036 Kg | .03 Kg |
| Working temperature | .5-60 °C | .5-60 °C |
| Article code | .OE870PRE | .OE670PRS |

TECHNISCHE DATEN

| | | |
|--|--------------------|--------------------|
| Hub pro Greiffinger | .5 mm | .3 mm |
| Kolbenhub | .6 mm | .6 mm |
| Luftvolumen pro Doppelhub | .8 cm ³ | .8 cm ³ |
| Theoretische Schließkraft pro Greiffinger 6 bar | .149 N | .246 N |
| Reelle Schließkraft pro Greiffinger 6 bar | .80 N | .135 N |
| Theoretische Öffnungskraft pro Greiffinger 6 bar | .167 N | .277 N |
| Reelle Öffnungskraft pro Greiffinger 6 bar | .90 N | .152 N |
| Betriebsdruck | .2-12 bar | .2-12 bar |
| Wiederholbarkeit | ±0.05 mm | ±0.05 mm |
| Gewicht | .036 Kg | .03 Kg |
| Betriebstemperatur | .5-60 °C | .5-60 °C |
| Artikelcode | .OE870PRE | .OE670PRS |

DONNÉES TECHNIQUES

| | | |
|---|--------------------|--------------------|
| Course par griffe | .5 mm | .3 mm |
| Course piston | .6 mm | .6 mm |
| Volume d'air pour course double | .8 cm ³ | .8 cm ³ |
| Force théorique en fermeture par griffe à 6 bar | .149 N | .246 N |
| Force réelle en fermeture par griffe à 6 bar | .80 N | .135 N |
| Force théorique en ouverture par griffe à 6 bar | .167 N | .277 N |
| Force réelle en ouverture par griffe à 6 bar | .90 N | .152 N |
| Pression d'exercice | .2-12 bar | .2-12 bar |
| Répétibilité | ±0.05 mm | ±0.05 mm |
| Poids | .036 Kg | .03 Kg |
| Température d'exercice | .5-60 °C | .5-60 °C |
| Code article | .OE870PRE | .OE670PRS |

OPE 205-3
OPE 205-3 S

OPE 175-3
OPE 175-3 S

OPE 125-3
OPE 125-3 S

OPE 110-3
OPE 110-3 S

OPE 105-3
OPE 105-3 S

OPE 90-3
OPE 90-3 S

OPE 80-3
OPE 80-3 S

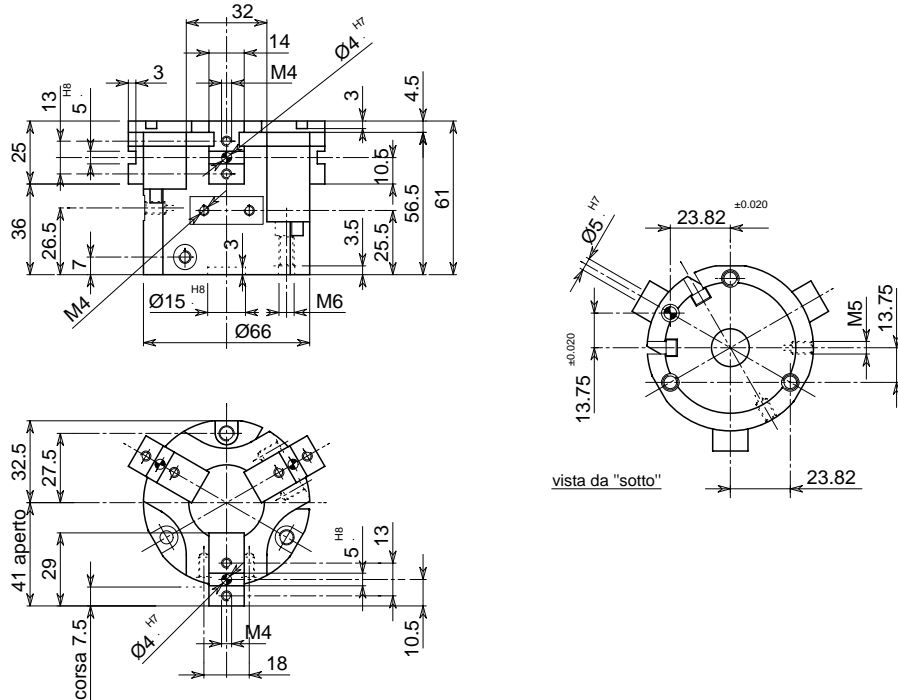
OPE 65-3
OPE 65-3 S

OPE 60-3
OPE 60-3 S

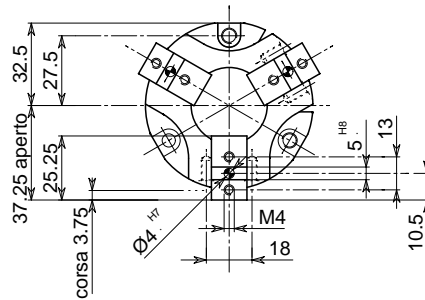


- **ORGANO DI PRESA A CORSA PARALLELA A TRE GRIFFE**
- **Three-jaw parallel gripper**
- **Drei-finger Parallelgreifer**
- **Pince de préhension à course parallèle, à trois griffes**

• Disegno OPE 65-3 • Drawing OPE 65-3 • Zeichnung OPE 65-3 • Dessin OPE 65-3

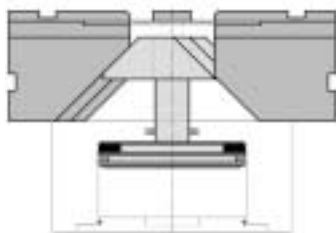


• Versione OPE 65-3 S • Version OPE 65-3 S • Ausführung OPE 65-3 S • Version OPE 65-3 S

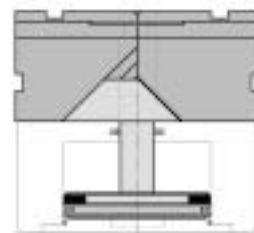


• Le dimensioni sono indicative e suscettibili di variazioni per migliorie tecniche. Ci riserviamo di apportare modifiche senza preavviso • All dimensions are indicative and subject to variation for technical upgrading. We reserve the right to make alterations without prior notification • Die Maßangaben sind indikativ und können sich bei technischen Verbesserung ändern. Wir behalten uns vor, ohne vorherige Benachrichtigung Änderungen vorzunehmen • Les dimensions sont fournies à titre indicatif, elles peuvent subir des variations pour cause d'améliorations techniques. Nous nous réservons le droit d'apporter des modifications sans préavis.

• SCHEMA DI FUNZIONAMENTO • OPERATIONAL DIAGRAM
• BETRIEBSSCHEMA • SCHÉMA DE FONCTIONNEMENT



Aperto
Open
Geöffnet
Ouvert

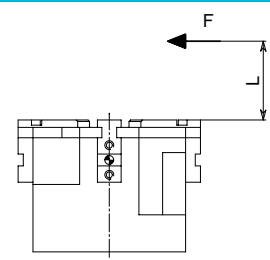
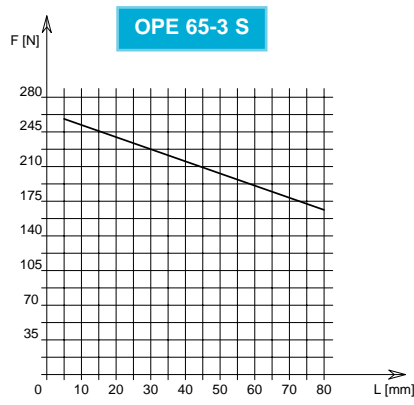
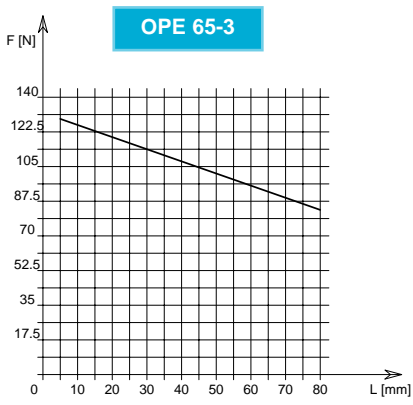


Chiuso
Closed
Geschlossen
Fermé



- **ORGANO DI PRESA A CORSA PARALLELA A TRE GRIFFE**
- **Three-jaw parallel gripper**
- **Drei-finger Parallelgreifer**
- **Pince de préhension à course parallèle, à trois griffes**

DIAGRAMMA FORZA DI CHIUSURA
CLAMPING FORCE DIAGRAM • DIAGRAM SCHLIEßKRAFT
DIAGRAMME DE LA FORCE DE FERMETURE



P = 6 bar

F = Forza di chiusura reale per griffa
 L = Distanza di rilevamento

F = Reelle Schließkraft pro Greiffinger
 L = Messungsabstand

F = True clamping force per jaw
 L = Reading distance

F = Force de fermeture réelle par griffe
 L = Distance de lecture

Valori nei dati tecnici rilevati alla distanza L = 10 mm • Technical specification values read at a distance L = 10 mm

• Werte der technischen Daten auf Distanz aufgenommen L = 10 mm • Valeurs des données techniques relevées à la distance L = 10 mm

DATI TECNICI

| | | |
|--|--------------------|--------------------|
| | OPE65-3 | OPE65-3S |
| Corsa per griffa | 7.5 mm | 3.75 mm |
| Corsa pistone | 7.5 mm | 7.5 mm |
| Volume aria per doppia corsa | 18 cm ³ | 18 cm ³ |
| Forza teorica di chiusura per griffa a 6 bar | 229 N | 449 N |
| Forza reale di chiusura per griffa a 6 bar | 126 N | 247 N |
| Forza teorica di apertura per griffa a 6 bar | 252 N | 494 N |
| Forza reale di apertura per griffa a 6 bar | 138 N | 272 N |
| Pressione di esercizio | 2-12 bar | 2-12 bar |
| Ripetibilità | ±0.05 mm | ±0.05 mm |
| Peso | 0.57 Kg | 0.5 Kg |
| Temperatura di esercizio | -5-60 °C | -5-60 °C |
| Codice articolo | .0E871PBE | .0E671PBS |

SPECIFICATIONS

| | | |
|---|--------------------|--------------------|
| | OPE65-3 | OPE65-3S |
| Stroke per jaw | 7.5 mm | 3.75 mm |
| Piston stroke | 7.5 mm | 7.5 mm |
| Dual stroke air volume | 18 cm ³ | 18 cm ³ |
| Theoretical clamping force per jaw at 6 bar | 229 N | 449 N |
| Actual clamping force per jaw at 6 bar | 126 N | 247 N |
| Theoretical opening force per jaw at 6 bar | 252 N | 494 N |
| Actual opening force per jaw at 6 bar | 138 N | 272 N |
| Working pressure | 2-12 bar | 2-12 bar |
| Reproducibility | ±0.05 mm | ±0.05 mm |
| Weight | 0.57 Kg | 0.5 Kg |
| Working temperature | -5-60 °C | -5-60 °C |
| Article code | .0E871PBE | .0E671PBS |

TECHNISCHE DATEN

| | | |
|--|--------------------|--------------------|
| | OPE65-3 | OPE65-3S |
| Hub pro Greiffinger | 7.5 mm | 3.75 mm |
| Kolbenhub | 7.5 mm | 7.5 mm |
| Luftvolumen pro Doppelhub | 18 cm ³ | 18 cm ³ |
| Theoretische Schließkraft pro Greiffinger 6 bar | 229 N | 449 N |
| Reelle Schließkraft pro Greiffinger 6 bar | 126 N | 247 N |
| Theoretische Öffnungskraft pro Greiffinger 6 bar | 252 N | 494 N |
| Reelle Öffnungskraft pro Greiffinger 6 bar | 138 N | 272 N |
| Betriebsdruck | 2-12 bar | 2-12 bar |
| Wiederholbarkeit | ±0.05 mm | ±0.05 mm |
| Gewicht | 0.57 Kg | 0.5 Kg |
| Betriebstemperatur | -5-60 °C | -5-60 °C |
| Artikelcode | .0E871PBE | .0E671PBS |

DONNÉES TECHNIQUES

| | | |
|---|--------------------|--------------------|
| | OPE65-3 | OPE65-3S |
| Course par griffe | 7.5 mm | 3.75 mm |
| Course piston | 7.5 mm | 7.5 mm |
| Volume d'air pour course double | 18 cm ³ | 18 cm ³ |
| Force théorique en fermeture par griffe à 6 bar | 229 N | 449 N |
| Force réelle en fermeture par griffe à 6 bar | 126 N | 247 N |
| Force théorique en ouverture par griffe à 6 bar | 252 N | 494 N |
| Force réelle en ouverture par griffe à 6 bar | 138 N | 272 N |
| Pression d'exercice | 2-12 bar | 2-12 bar |
| Répetibilité | ±0.05 mm | ±0.05 mm |
| Poids | 0.57 Kg | 0.5 Kg |
| Température d'exercice | -5-60 °C | -5-60 °C |
| Code article | .0E871PBE | .0E671PBS |

OPE 205-3
OPE 205-3 S

OPE 175-3
OPE 175-3 S

OPE 125-3
OPE 125-3 S

OPE 110-3
OPE 110-3 S

OPE 105-3
OPE 105-3 S

OPE 90-3
OPE 90-3 S

OPE 80-3
OPE 80-3 S

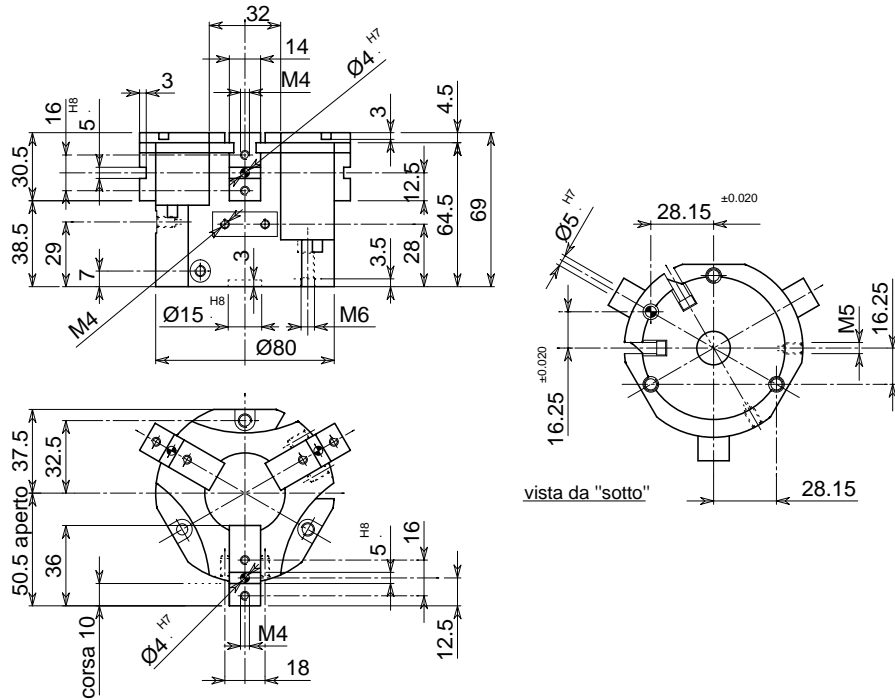
OPE 65-3
OPE 65-3 S

OPE 60-3
OPE 60-3 S

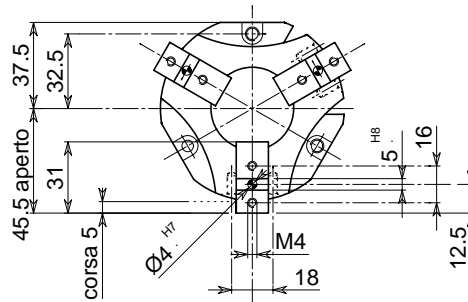


• **ORGANO DI PRESA A CORSA PARALLELA A TRE GRIFFE**
 • **Three-jaw parallel gripper**
 • **Drei-finger Parallelgreifer**
 • **Pince de préhension à course parallèle, à trois griffes**

• Disegno OPE 80-3 • Drawing OPE 80-3 • Zeichnung OPE 80-3 • Dessin OPE 80-3

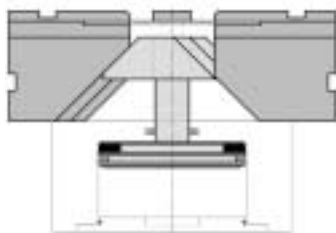


• Versione OPE 80-3 S • Version OPE 80-3 S • Ausführung OPE 80-3 S • Version OPE 80-3 S

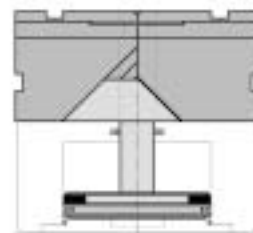


• Le dimensioni sono indicative e suscettibili di variazioni per migliorie tecniche. Ci riserviamo di apportare modifiche senza preavviso • All dimensions are indicative and subject to variation for technical upgrading. We reserve the right to make alterations without prior notification • Die Maßangaben sind indikativ und können sich bei technischen Verbesserung ändern. Wir behalten uns vor, ohne vorherige Benachrichtigung Änderungen vorzunehmen • Les dimensions sont fournies à titre indicatif, elles peuvent subir des variations pour cause d'améliorations techniques. Nous nous réservons le droit d'apporter des modifications sans préavis.

• **SCHEMA DI FUNZIONAMENTO • OPERATIONAL DIAGRAM**
 • **BETRIEBSSCHEMA • SCHÉMA DE FONCTIONNEMENT**



Aperto
 Open
 Geöffnet
 Ouvert



Chiuso
 Closed
 Geschlossen
 Fermé

OPE 205-3
 OPE 205-3 S

OPE 175-3
 OPE 175-3 S

OPE 125-3
 OPE 125-3 S

OPE 110-3
 OPE 110-3 S

OPE 105-3
 OPE 105-3 S

OPE 90-3
 OPE 90-3 S

OPE 80-3
OPE 80-3 S

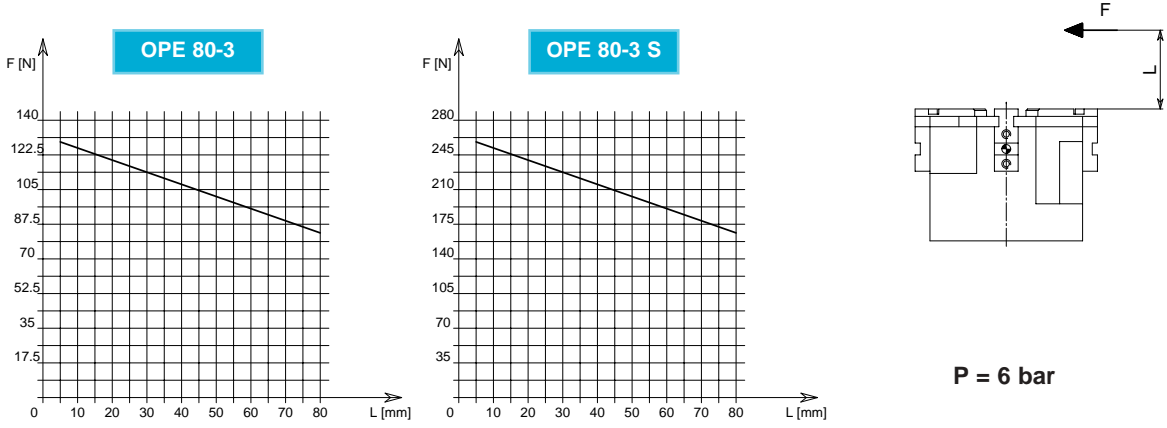
OPE 65-3
 OPE 65-3 S

OPE 60-3
 OPE 60-3 S



• **ORGANO DI PRESA A CORSA PARALLELA A TRE GRIFFE**
 • **Three-jaw parallel gripper**
 • **Drei-finger Parallelgreifer**
 • **Pince de préhension à course parallèle, à trois griffes**

DIAGRAMMA FORZA DI CHIUSURA
CLAMPING FORCE DIAGRAM • DIAGRAM SCHLIEßKRAFT
DIAGRAMME DE LA FORCE DE FERMETURE



F = Forza di chiusura reale per griffa
L = Distanza di rilevamento
F = True clamping force per jaw
L = Reading distance

F = Reelle Schließkraft pro Greiffinger
L = Messungsabstand
F = Force de fermeture réelle par griffe
L = Distance de lecture

Valori nei dati tecnici rilevati alla distanza L = 10 mm • Technical specification values read at a distance L = 10 mm
 • Werte der technischen Daten auf Distanz aufgenommen L = 10 mm • Valeurs des données techniques relevées à la distance L = 10 mm

DATI TECNICI

| | OPE80-3 | OPE80-3S |
|--|--------------------|--------------------|
| Corsa per griffa | 10 mm | 5 mm |
| Corsa pistone | 10 mm | 10 mm |
| Volume aria per doppia corsa | 26 cm ³ | 26 cm ³ |
| Forza teorica di chiusura per griffa a 6 bar | 229 N | 449 N |
| Forza reale di chiusura per griffa a 6 bar | 126 N | 247 N |
| Forza teorica di apertura per griffa a 6 bar | 252 N | 494 N |
| Forza reale di apertura per griffa a 6 bar | 138 N | 272 N |
| Pressione di esercizio | 2-12 bar | 2-12 bar |
| Ripetibilità | ±0.05 mm | ±0.05 mm |
| Peso | 0.9 Kg | 0.85 Kg |
| Temperatura di esercizio | -5-60 °C | -5-60 °C |
| Codice articolo | .OE872PCE | .OE672PCS |

SPECIFICATIONS

| | OPE80-3 | OPE80-3S |
|---|--------------------|--------------------|
| Stroke per jaw | 10 mm | 5 mm |
| Piston stroke | 10 mm | 10 mm |
| Dual stroke air volume | 26 cm ³ | 26 cm ³ |
| Theoretical clamping force per jaw at 6 bar | 229 N | 449 N |
| Actual clamping force per jaw at 6 bar | 126 N | 247 N |
| Theoretical opening force per jaw at 6 bar | 252 N | 494 N |
| Actual opening force per jaw at 6 bar | 138 N | 272 N |
| Working pressure | 2-12 bar | 2-12 bar |
| Reproducibility | ±0.05 mm | ±0.05 mm |
| Weight | 0.9 Kg | 0.85 Kg |
| Working temperature | -5-60 °C | -5-60 °C |
| Article code | .OE872PCE | .OE672PCS |

TECHNISCHE DATEN

| | OPE80-3 | OPE80-3S |
|--|--------------------|--------------------|
| Hub pro Greiffinger | 10 mm | 5 mm |
| Kolbenhub | 10 mm | 10 mm |
| Luftvolumen pro Doppelhub | 26 cm ³ | 26 cm ³ |
| Theoretische Schließkraft pro Greiffinger 6 bar | 229 N | 449 N |
| Reelle Schließkraft pro Greiffinger 6 bar | 126 N | 247 N |
| Theoretische Öffnungskraft pro Greiffinger 6 bar | 252 N | 494 N |
| Reelle Öffnungskraft pro Greiffinger 6 bar | 138 N | 272 N |
| Betriebsdruck | 2-12 bar | 2-12 bar |
| Wiederholbarkeit | ±0.05 mm | ±0.05 mm |
| Gewicht | 0.9 Kg | 0.85 Kg |
| Betriebstemperatur | -5-60 °C | -5-60 °C |
| Artikelcode | .OE872PCE | .OE672PCS |

DONNÉES TECHNIQUES

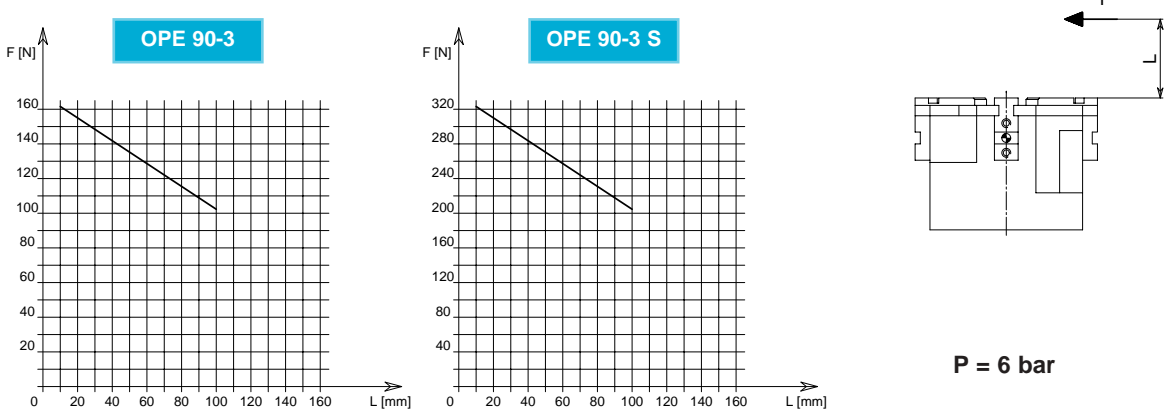
| | OPE80-3 | OPE80-3S |
|---|--------------------|--------------------|
| Course par griffe | 10 mm | 5 mm |
| Course piston | 10 mm | 10 mm |
| Volume d'air pour course double | 26 cm ³ | 26 cm ³ |
| Force théorique en fermeture par griffe à 6 bar | 229 N | 449 N |
| Force réelle en fermeture par griffe à 6 bar | 126 N | 247 N |
| Force théorique en ouverture par griffe à 6 bar | 252 N | 494 N |
| Force réelle en ouverture par griffe à 6 bar | 138 N | 272 N |
| Pression d'exercice | 2-12 bar | 2-12 bar |
| Répétibilité | ±0.05 mm | ±0.05 mm |
| Poids | 0.9 Kg | 0.85 Kg |
| Température d'exercice | -5-60 °C | -5-60 °C |
| Code article | .OE872PCE | .OE672PCS |

- OPE 205-3
OPE 205-3 S
- OPE 175-3
OPE 175-3 S
- OPE 125-3
OPE 125-3 S
- OPE 110-3
OPE 110-3 S
- OPE 105-3
OPE 105-3 S
- OPE 90-3
OPE 90-3 S
- OPE 80-3**
OPE 80-3 S
- OPE 65-3
OPE 65-3 S
- OPE 60-3
OPE 60-3 S



- **ORGANO DI PRESA A CORSA PARALLELA A TRE GRIFFE**
- **Three-jaw parallel gripper**
- **Drei-finger Parallelgreifer**
- **Pince de préhension à course parallèle, à trois griffes**

DIAGRAMMA FORZA DI CHIUSURA
CLAMPING FORCE DIAGRAM • DIAGRAM SCHLIEßKRAFT
DIAGRAMME DE LA FORCE DE FERMETURE



F = Forza di chiusura reale per griffa
 L = Distanza di rilevamento

F = True clamping force per jaw
 L = Reading distance

F = Reelle Schließkraft pro Greiffinger
 L = Messungsabstand

F = Force de fermeture réelle par griffe
 L = Distance de lecture

Valori nei dati tecnici rilevati alla distanza L = 20 mm • Technical specification values read at a distance L = 20 mm

• Werte der technischen Daten auf Distanz aufgenommen L = 20 mm • Valeurs des données techniques relevées à la distance L = 20 mm

DATI TECNICI

| | | |
|--|----------------------|----------------------|
| | OPE90-3 | OPE90-3S |
| Corsa per griffa | 12 mm | 6 mm |
| Corsa pistone | 12 mm | 12 mm |
| Volume aria per doppia corsa | 36.5 cm ³ | 36.5 cm ³ |
| Forza teorica di chiusura per griffa a 6 bar | 287 N | 563 N |
| Forza reale di chiusura per griffa a 6 bar | 155 N | 310 N |
| Forza teorica di apertura per griffa a 6 bar | 319 N | 625 N |
| Forza reale di apertura per griffa a 6 bar | 172 N | 344 N |
| Pressione di esercizio | 2-12 bar | 2-12 bar |
| Ripetibilità | ±0.05 mm | ±0.05 mm |
| Peso | 1.3 Kg | 1.2 Kg |
| Temperatura di esercizio | -5-60 °C | -5-60 °C |
| Codice articolo | .OE873PDE | .OE673PDS |

SPECIFICATIONS

| | | |
|---|----------------------|----------------------|
| | OPE90-3 | OPE90-3S |
| Stroke per jaw | 12 mm | 6 mm |
| Piston stroke | 12 mm | 12 mm |
| Dual stroke air volume | 36.5 cm ³ | 36.5 cm ³ |
| Theoretical clamping force per jaw at 6 bar | 287 N | 563 N |
| Actual clamping force per jaw at 6 bar | 155 N | 310 N |
| Theoretical opening force per jaw at 6 bar | 319 N | 625 N |
| Actual opening force per jaw at 6 bar | 172 N | 344 N |
| Working pressure | 2-12 bar | 2-12 bar |
| Reproducibility | ±0.05 mm | ±0.05 mm |
| Weight | 1.3 Kg | 1.2 Kg |
| Working temperature | -5-60 °C | -5-60 °C |
| Article code | .OE873PDE | .OE673PDS |

TECHNISCHE DATEN

| | | |
|--|----------------------|----------------------|
| | OPE90-3 | OPE90-3S |
| Hub pro Greiffinger | 12 mm | 6 mm |
| Kolbenhub | 12 mm | 12 mm |
| Luftvolumen pro Doppelhub | 36.5 cm ³ | 36.5 cm ³ |
| Theoretische Schließkraft pro Greiffinger 6 bar | 287 N | 563 N |
| Reelle Schließkraft pro Greiffinger 6 bar | 155 N | 310 N |
| Theoretische Öffnungskraft pro Greiffinger 6 bar | 319 N | 625 N |
| Reelle Öffnungskraft pro Greiffinger 6 bar | 172 N | 344 N |
| Betriebsdruck | 2-12 bar | 2-12 bar |
| Wiederholbarkeit | ±0.05 mm | ±0.05 mm |
| Gewicht | 1.3 Kg | 1.2 Kg |
| Betriebstemperatur | -5-60 °C | -5-60 °C |
| Artikelcode | .OE873PDE | .OE673PDS |

DONNÉES TECHNIQUES

| | | |
|---|----------------------|----------------------|
| | OPE90-3 | OPE90-3S |
| Course par griffe | 12 mm | 6 mm |
| Course piston | 12 mm | 12 mm |
| Volume d'air pour course double | 36.5 cm ³ | 36.5 cm ³ |
| Force théorique en fermeture par griffe à 6 bar | 287 N | 563 N |
| Force réelle en fermeture par griffe à 6 bar | 155 N | 310 N |
| Force théorique en ouverture par griffe à 6 bar | 319 N | 625 N |
| Force réelle en ouverture par griffe à 6 bar | 172 N | 344 N |
| Pression d'exercice | 2-12 bar | 2-12 bar |
| Répétibilité | ±0.05 mm | ±0.05 mm |
| Poids | 1.3 Kg | 1.2 Kg |
| Température d'exercice | -5-60 °C | -5-60 °C |
| Code article | .OE873PDE | .OE673PDS |

OPE 205-3
OPE 205-3 S

OPE 175-3
OPE 175-3 S

OPE 125-3
OPE 125-3 S

OPE 110-3
OPE 110-3 S

OPE 105-3
OPE 105-3 S

OPE 90-3
OPE 90-3 S

OPE 80-3
OPE 80-3 S

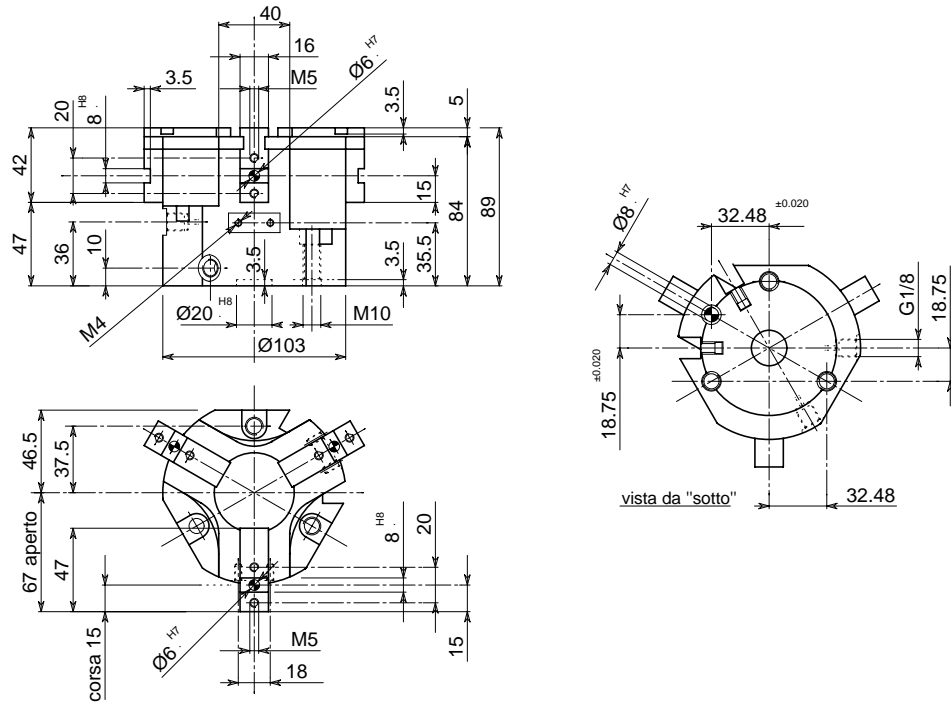
OPE 65-3
OPE 65-3 S

OPE 60-3
OPE 60-3 S

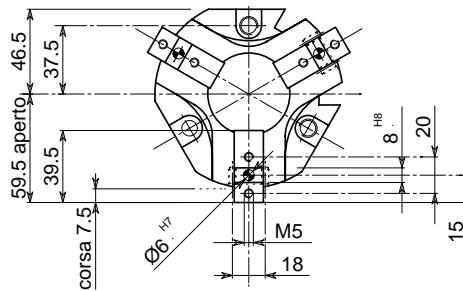


• **ORGANO DI PRESA A CORSA PARALLELA A TRE GRIFFE**
 • **Three-jaw parallel gripper**
 • **Drei-finger Parallelgreifer**
 • **Pince de préhension à course parallèle, à trois griffes**

• Disegno OPE 105-3 • Drawing OPE 105-3 • Zeichnung OPE 105-3 • Dessin OPE 105-3

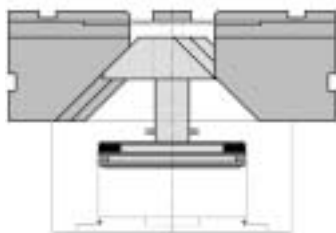


• Versione OPE 105-3 S • Version OPE 105-3 S • Ausführung OPE 105-3 S • Version OPE 105-3 S

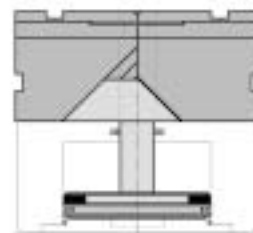


• Le dimensioni sono indicative e suscettibili di variazioni per migliorie tecniche. Ci riserviamo di apportare modifiche senza preavviso • All dimensions are indicative and subject to variation for technical upgrading. We reserve the right to make alterations without prior notification • Die Maßangaben sind indikativ und können sich bei technischen Verbesserungen ändern. Wir behalten uns vor, ohne vorherige Benachrichtigung Änderungen vorzunehmen • Les dimensions sont fournies à titre indicatif, elles peuvent subir des variations pour cause d'améliorations techniques. Nous nous réservons le droit d'apporter des modifications sans préavis.

• SCHEMA DI FUNZIONAMENTO • OPERATIONAL DIAGRAM
 • BETRIEBSSCHEMA • SCHÉMA DE FONCTIONNEMENT



Aperto
 Open
 Geöffnet
 Ouvert

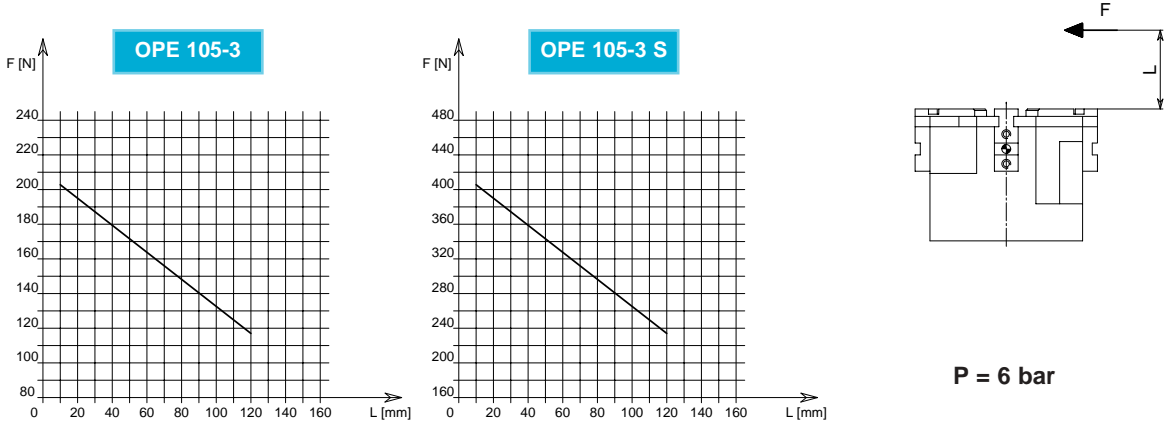


Chiuso
 Closed
 Geschlossen
 Fermé



• **ORGANO DI PRESA A CORSA PARALLELA A TRE GRIFFE**
 • **Three-jaw parallel gripper**
 • **Drei-finger Parallelgreifer**
 • **Pince de préhension à course parallèle, à trois griffes**

DIAGRAMMA FORZA DI CHIUSURA
CLAMPING FORCE DIAGRAM • DIAGRAM SCHLIEßKRAFT
DIAGRAMME DE LA FORCE DE FERMETURE



F = Forza di chiusura reale per griffa
L = Distanza di rilevamento
F = True clamping force per jaw
L = Reading distance

F = Reelle Schließkraft pro Greiffinger
L = Messungsabstand
F = Force de fermeture réelle par griffe
L = Distance de lecture

Valori nei dati tecnici rilevati alla distanza L = 20 mm • Technical specification values read at a distance L = 20 mm
 • Werte der technischen Daten auf Distanz aufgenommen L = 20 mm • Valeurs des données techniques relevées à la distance L = 20 mm

| DATI TECNICI | OPE105-3 | OPE105-3S |
|--|---------------------|---------------------|
| Corsa per griffa | 15 mm | 7.5 mm |
| Corsa pistone | 15 mm | 15 mm |
| Volume aria per doppia corsa | .57 cm ³ | .57 cm ³ |
| Forza teorica di chiusura per griffa a 6 bar | .361 N | .710 N |
| Forza reale di chiusura per griffa a 6 bar | .195 N | .390 N |
| Forza teorica di apertura per griffa a 6 bar | .392 N | .771 N |
| Forza reale di apertura per griffa a 6 bar | .211 N | .422 N |
| Pressione di esercizio | .2-12 bar | .2-12 bar |
| Ripetibilità | ±0.05 mm | ±0.05 mm |
| Peso | 2.1 Kg | 1.85 Kg |
| Temperatura di esercizio | .5-60 °C | .5-60 °C |
| Codice articolo | .OE874PEE | .OE674PES |

| SPECIFICATIONS | OPE105-3 | OPE105-3S |
|---|---------------------|---------------------|
| Stroke per jaw | 15 mm | 7.5 mm |
| Piston stroke | 15 mm | 15 mm |
| Dual stroke air volume | .57 cm ³ | .57 cm ³ |
| Theoretical clamping force per jaw at 6 bar | .361 N | .710 N |
| Actual clamping force per jaw at 6 bar | .195 N | .390 N |
| Theoretical opening force per jaw at 6 bar | .392 N | .771 N |
| Actual opening force per jaw at 6 bar | .211 N | .422 N |
| Working pressure | .2-12 bar | .2-12 bar |
| Reproducibility | ±0.05 mm | ±0.05 mm |
| Weight | 2.1 Kg | 1.85 Kg |
| Working temperature | .5-60 °C | .5-60 °C |
| Article code | .OE874PEE | .OE674PES |

| TECHNISCHE DATEN | OPE105-3 | OPE105-3S |
|--|---------------------|---------------------|
| Hub pro Greiffinger | 15 mm | 7.5 mm |
| Kolbenhub | 15 mm | 15 mm |
| Luftvolumen pro Doppelhub | .57 cm ³ | .57 cm ³ |
| Theoretische Schließkraft pro Greiffinger 6 bar | .361 N | .710 N |
| Reelle Schließkraft pro Greiffinger 6 bar | .195 N | .390 N |
| Theoretische Öffnungskraft pro Greiffinger 6 bar | .392 N | .771 N |
| Reelle Öffnungskraft pro Greiffinger 6 bar | .211 N | .422 N |
| Betriebsdruck | .2-12 bar | .2-12 bar |
| Wiederholbarkeit | ±0.05 mm | ±0.05 mm |
| Gewicht | 2.1 Kg | 1.85 Kg |
| Betriebstemperatur | .5-60 °C | .5-60 °C |
| Artikelcode | .OE874PEE | .OE674PES |

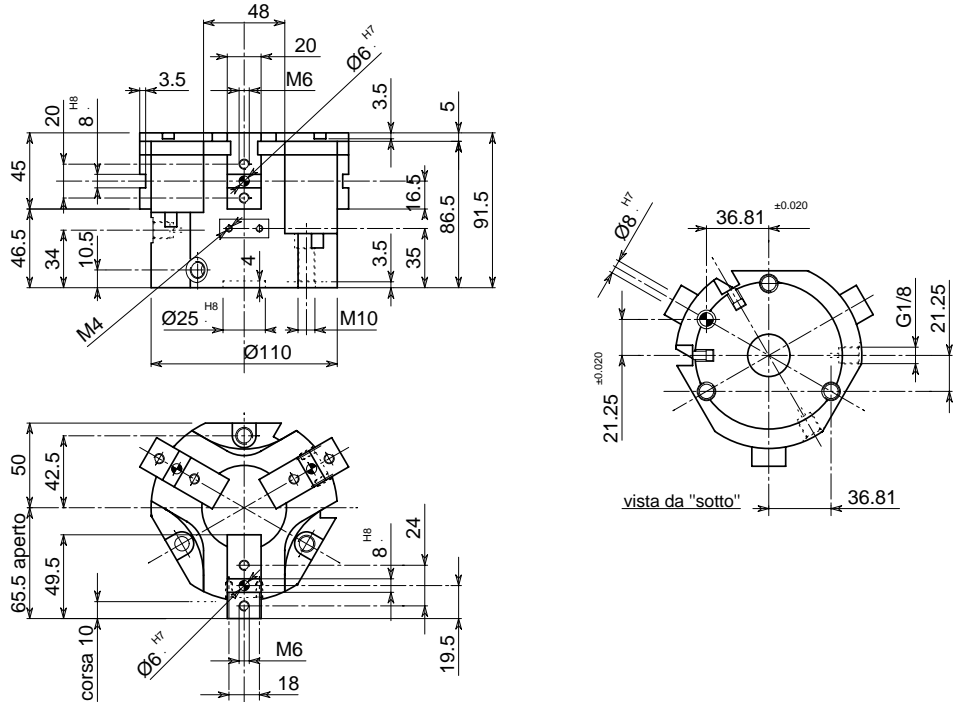
| DONNÉES TECHNIQUES | OPE105-3 | OPE105-3S |
|---|---------------------|---------------------|
| Course par griffe | 15 mm | 7.5 mm |
| Course piston | 15 mm | 15 mm |
| Volume d'air pour course double | .57 cm ³ | .57 cm ³ |
| Force théorique en fermeture par griffe à 6 bar | .361 N | .710 N |
| Force réelle en fermeture par griffe à 6 bar | .195 N | .390 N |
| Force théorique en ouverture par griffe à 6 bar | .392 N | .771 N |
| Force réelle en ouverture par griffe à 6 bar | .211 N | .422 N |
| Pression d'exercice | .2-12 bar | .2-12 bar |
| Répétibilité | ±0.05 mm | ±0.05 mm |
| Poids | 2.1 Kg | 1.85 Kg |
| Température d'exercice | .5-60 °C | .5-60 °C |
| Code article | .OE874PEE | .OE674PES |

- OPE 205-3
OPE 205-3 S
- OPE 175-3
OPE 175-3 S
- OPE 125-3
OPE 125-3 S
- OPE 110-3
OPE 110-3 S
- OPE 105-3
OPE 105-3 S
- OPE 90-3
OPE 90-3 S
- OPE 80-3
OPE 80-3 S
- OPE 65-3
OPE 65-3 S
- OPE 60-3
OPE 60-3 S

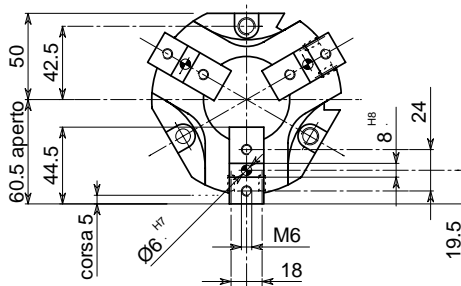


- **ORGANO DI PRESA A CORSA PARALLELA A TRE GRIFFE**
- **Three-jaw parallel gripper**
- **Drei-finger Parallelgreifer**
- **Pince de préhension à course parallèle, à trois griffes**

• Disegno OPE 110-3 • Drawing OPE 110-3 • Zeichnung OPE 110-3 • Dessin OPE 110-3

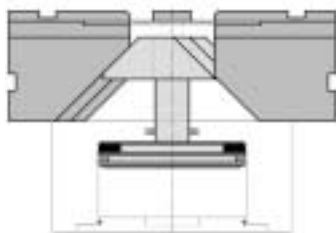


• Versione OPE 110-3 S • Version OPE 110-3 S • Ausführung OPE 110-3 S • Version OPE 110-3 S

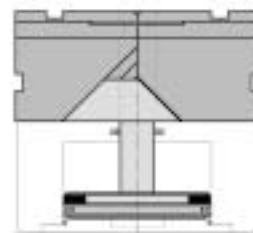


• Le dimensioni sono indicative e suscettibili di variazioni per migliorie tecniche. Ci riserviamo di apportare modifiche senza preavviso • All dimensions are indicative and subject to variation for technical upgrading. We reserve the right to make alterations without prior notification • Die Maßangaben sind indikativ und können sich bei technischen Verbesserung ändern. Wir behalten uns vor, ohne vorherige Benachrichtigung Änderungen vorzunehmen • Les dimensions sont fournies à titre indicatif, elles peuvent subir des variations pour cause d'améliorations techniques. Nous nous réservons le droit d'apporter des modifications sans préavis.

• SCHEMA DI FUNZIONAMENTO • OPERATIONAL DIAGRAM
• BETRIEBSSCHEMA • SCHÉMA DE FONCTIONNEMENT



Aperto
Open
Geöffnet
Ouvert

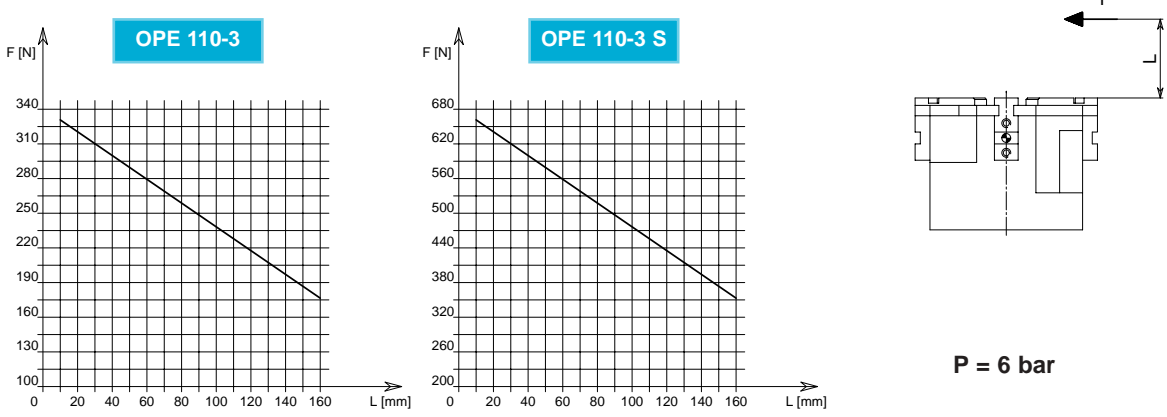


Chiuso
Closed
Geschlossen
Fermé



- **ORGANO DI PRESA A CORSA PARALLELA A TRE GRIFFE**
- **Three-jaw parallel gripper**
- **Drei-finger Parallelgreifer**
- **Pince de préhension à course parallèle, à trois griffes**

DIAGRAMMA FORZA DI CHIUSURA
CLAMPING FORCE DIAGRAM • DIAGRAM SCHLIEßKRAFT
DIAGRAMME DE LA FORCE DE FERMETURE



F = Forza di chiusura reale per griffa
 L = Distanza di rilevamento

F = Reelle Schließkraft pro Greiffinger
 L = Messungsabstand

F = True clamping force per jaw
 L = Reading distance

F = Force de fermeture réelle par griffe
 L = Distance de lecture

Valori nei dati tecnici rilevati alla distanza L = 20 mm • Technical specification values read at a distance L = 20 mm

• Werte der technischen Daten auf Distanz aufgenommen L = 20 mm • Valeurs des données techniques relevées à la distance L = 20 mm

| DATI TECNICI | OPE110-3 | OPE110-3S |
|--|----------------------|----------------------|
| Corsa per griffa | 10 mm | 5 mm |
| Corsa pistone | 10 mm | 10 mm |
| Volume aria per doppia corsa | 60.5 cm ³ | 60.5 cm ³ |
| Forza teorica di chiusura per griffa a 6 bar | 583 N | 1144 N |
| Forza reale di chiusura per griffa a 6 bar | 320 N | 629 N |
| Forza teorica di apertura per griffa a 6 bar | 623 N | 1222 N |
| Forza reale di apertura per griffa a 6 bar | 342 N | 671 N |
| Pressione di esercizio | 2-12 bar | 2-12 bar |
| Ripetibilità | ±0.05 mm | ±0.05 mm |
| Peso | 2.35 Kg | 2.2 Kg |
| Temperatura di esercizio | -5-60 °C | -5-60 °C |
| Codice articolo | .OE879PLE | .OE679PLS |

| SPECIFICATIONS | OPE110-3 | OPE110-3S |
|---|----------------------|----------------------|
| Stroke per jaw | 10 mm | 5 mm |
| Piston stroke | 10 mm | 10 mm |
| Dual stroke air volume | 60.5 cm ³ | 60.5 cm ³ |
| Theoretical clamping force per jaw at 6 bar | 583 N | 1144 N |
| Actual clamping force per jaw at 6 bar | 320 N | 629 N |
| Theoretical opening force per jaw at 6 bar | 623 N | 1222 N |
| Actual opening force per jaw at 6 bar | 342 N | 671 N |
| Working pressure | 2-12 bar | 2-12 bar |
| Reproducibility | ±0.05 mm | ±0.05 mm |
| Weight | 2.35 Kg | 2.2 Kg |
| Working temperature | -5-60 °C | -5-60 °C |
| Article code | .OE879PLE | .OE679PLS |

| TECHNISCHE DATEN | OPE110-3 | OPE110-3S |
|--|----------------------|----------------------|
| Hub pro Greiffinger | 10 mm | 5 mm |
| Kolbenhub | 10 mm | 10 mm |
| Luftvolumen pro Doppelhub | 60.5 cm ³ | 60.5 cm ³ |
| Theoretische Schließkraft pro Greiffinger 6 bar | 583 N | 1144 N |
| Reelle Schließkraft pro Greiffinger 6 bar | 320 N | 629 N |
| Theoretische Öffnungskraft pro Greiffinger 6 bar | 623 N | 1222 N |
| Reelle Öffnungskraft pro Greiffinger 6 bar | 342 N | 671 N |
| Betriebsdruck | 2-12 bar | 2-12 bar |
| Wiederholbarkeit | ±0.05 mm | ±0.05 mm |
| Gewicht | 2.35 Kg | 2.2 Kg |
| Betriebstemperatur | -5-60 °C | -5-60 °C |
| Artikelcode | .OE879PLE | .OE679PLS |

| DONNÉES TECHNIQUES | OPE110-3 | OPE110-3S |
|---|----------------------|----------------------|
| Course par griffe | 10 mm | 5 mm |
| Course piston | 10 mm | 10 mm |
| Volume d'air pour course double | 60.5 cm ³ | 60.5 cm ³ |
| Force théorique en fermeture par griffe à 6 bar | 583 N | 1144 N |
| Force réelle en fermeture par griffe à 6 bar | 320 N | 629 N |
| Force théorique en ouverture par griffe à 6 bar | 623 N | 1222 N |
| Force réelle en ouverture par griffe à 6 bar | 342 N | 671 N |
| Pression d'exercice | 2-12 bar | 2-12 bar |
| Répétibilité | ±0.05 mm | ±0.05 mm |
| Poids | 2.35 Kg | 2.2 Kg |
| Température d'exercice | -5-60 °C | -5-60 °C |
| Code article | .OE879PLE | .OE679PLS |

OPE 205-3
OPE 205-3 S

OPE 175-3
OPE 175-3 S

OPE 125-3
OPE 125-3 S

OPE 110-3
OPE 110-3 S

OPE 105-3
OPE 105-3 S

OPE 90-3
OPE 90-3 S

OPE 80-3
OPE 80-3 S

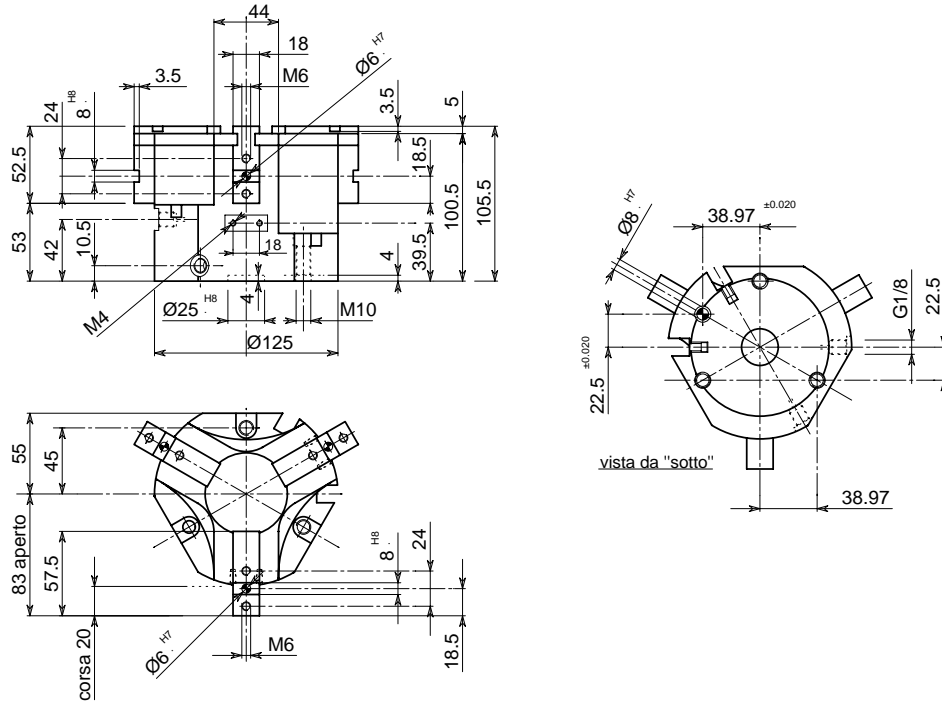
OPE 65-3
OPE 65-3 S

OPE 60-3
OPE 60-3 S

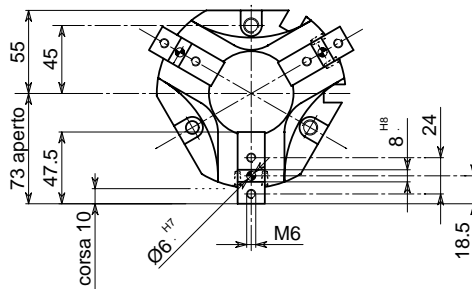


- **ORGANO DI PRESA A CORSA PARALLELA A TRE GRIFFE**
- **Three-jaw parallel gripper**
- **Drei-finger Parallelgreifer**
- **Pince de préhension à course parallèle, à trois griffes**

• Disegno OPE 125-3 • Drawing OPE 125-3 • Zeichnung OPE 125-3 • Dessin OPE 125-3

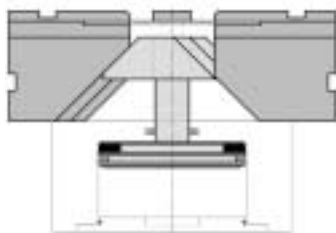


• Versione OPE 125-3 S • Version OPE 125-3 S • Ausführung OPE 125-3 S • Version OPE 125-3 S

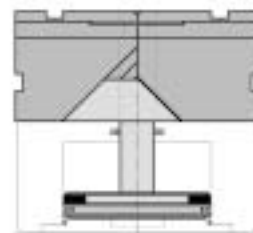


• Le dimensioni sono indicative e suscettibili di variazioni per migliorie tecniche. Ci riserviamo di apportare modifiche senza preavviso • All dimensions are indicative and subject to variation for technical upgrading. We reserve the right to make alterations without prior notification • Die Maßangaben sind indikativ und können sich bei technischen Verbesserung ändern. Wir behalten uns vor, ohne vorherige Benachrichtigung Änderungen vorzunehmen • Les dimensions sont fournies à titre indicatif, elles peuvent subir des variations pour cause d'améliorations techniques. Nous nous réservons le droit d'apporter des modifications sans préavis.

• SCHEMA DI FUNZIONAMENTO • OPERATIONAL DIAGRAM
• BETRIEBSSCHEMA • SCHÉMA DE FONCTIONNEMENT



Aperto
Open
Geöffnet
Ouvert

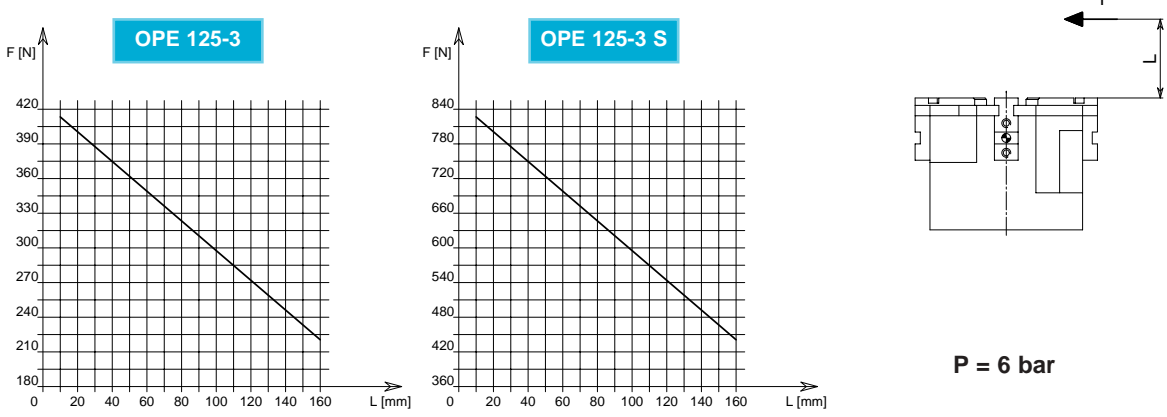


Chiuso
Closed
Geschlossen
Fermé



- **ORGANO DI PRESA A CORSA PARALLELA A TRE GRIFFE**
- **Three-jaw parallel gripper**
- **Drei-finger Parallelgreifer**
- **Pince de préhension à course parallèle, à trois griffes**

DIAGRAMMA FORZA DI CHIUSURA
CLAMPING FORCE DIAGRAM • DIAGRAM SCHLIEßKRAFT
DIAGRAMME DE LA FORCE DE FERMETURE



F = Forza di chiusura reale per griffa
L = Distanza di rilevamento

F = True clamping force per jaw
L = Reading distance

F = Reelle Schließkraft pro Greiffinger
L = Messungsabstand

F = Force de fermeture réelle par griffe
L = Distance de lecture

Valori nei dati tecnici rilevati alla distanza L = 20 mm • Technical specification values read at a distance L = 20 mm
 • Werte der technischen Daten auf Distanz aufgenommen L = 20 mm • Valeurs des données techniques relevées à la distance L = 20 mm

| DATI TECNICI | OPE125-3 | OPE125-3S |
|--|----------------------|----------------------|
| Corsa per griffa | .20 mm | .3 mm |
| Corsa pistone | .20 mm | .20 mm |
| Volume aria per doppia corsa | .150 cm ³ | .150 cm ³ |
| Forza teorica di chiusura per griffa a 6 bar | .729 N | .1431 N |
| Forza reale di chiusura per griffa a 6 bar | .400 N | .787 N |
| Forza teorica di apertura per griffa a 6 bar | .769 N | .1434 N |
| Forza reale di apertura per griffa a 6 bar | .422 N | .830 N |
| Pressione di esercizio | .2-12 bar | .2-12 bar |
| Ripetibilità | ±0.05 mm | ±0.05 mm |
| Peso | .3.15 Kg | .2.95 Kg |
| Temperatura di esercizio | .5-60 °C | .5-60 °C |
| Codice articolo | .0E875PFE | .0E675PFS |

| SPECIFICATIONS | OPE125-3 | OPE125-3S |
|---|----------------------|----------------------|
| Stroke per jaw | .20 mm | .3 mm |
| Piston stroke | .20 mm | .20 mm |
| Dual stroke air volume | .150 cm ³ | .150 cm ³ |
| Theoretical clamping force per jaw at 6 bar | .729 N | .1431 N |
| Actual clamping force per jaw at 6 bar | .400 N | .787 N |
| Theoretical opening force per jaw at 6 bar | .769 N | .1434 N |
| Actual opening force per jaw at 6 bar | .422 N | .830 N |
| Working pressure | .2-12 bar | .2-12 bar |
| Reproducibility | ±0.05 mm | ±0.05 mm |
| Weight | .3.15 Kg | .2.95 Kg |
| Working temperature | .5-60 °C | .5-60 °C |
| Article code | .0E875PFE | .0E675PFS |

| TECHNISCHE DATEN | OPE125-3 | OPE125-3S |
|--|----------------------|----------------------|
| Hub pro Greiffinger | .20 mm | .3 mm |
| Kolbenhub | .20 mm | .20 mm |
| Luftvolumen pro Doppelhub | .150 cm ³ | .150 cm ³ |
| Theoretische Schließkraft pro Greiffinger 6 bar | .729 N | .1431 N |
| Reelle Schließkraft pro Greiffinger 6 bar | .400 N | .787 N |
| Theoretische Öffnungskraft pro Greiffinger 6 bar | .769 N | .1434 N |
| Reelle Öffnungskraft pro Greiffinger 6 bar | .422 N | .830 N |
| Betriebsdruck | .2-12 bar | .2-12 bar |
| Wiederholbarkeit | ±0.05 mm | ±0.05 mm |
| Gewicht | .3.15 Kg | .2.95 Kg |
| Betriebstemperatur | .5-60 °C | .5-60 °C |
| Artikelcode | .0E875PFE | .0E675PFS |

| DONNÉES TECHNIQUES | OPE125-3 | OPE125-3S |
|---|----------------------|----------------------|
| Course par griffe | .20 mm | .3 mm |
| Course piston | .20 mm | .20 mm |
| Volume d'air pour course double | .150 cm ³ | .150 cm ³ |
| Force théorique en fermeture par griffe à 6 bar | .729 N | .1431 N |
| Force réelle en fermeture par griffe à 6 bar | .400 N | .787 N |
| Force théorique en ouverture par griffe à 6 bar | .769 N | .1434 N |
| Force réelle en ouverture par griffe à 6 bar | .422 N | .830 N |
| Pression d'exercice | .2-12 bar | .2-12 bar |
| Répétibilité | ±0.05 mm | ±0.05 mm |
| Poids | .3.15 Kg | .2.95 Kg |
| Température d'exercice | .5-60 °C | .5-60 °C |
| Code article | .0E875PFE | .0E675PFS |

OPE 205-3
OPE 205-3 S

OPE 175-3
OPE 175-3 S

OPE 125-3
OPE 125-3 S

OPE 110-3
OPE 110-3 S

OPE 105-3
OPE 105-3 S

OPE 90-3
OPE 90-3 S

OPE 80-3
OPE 80-3 S

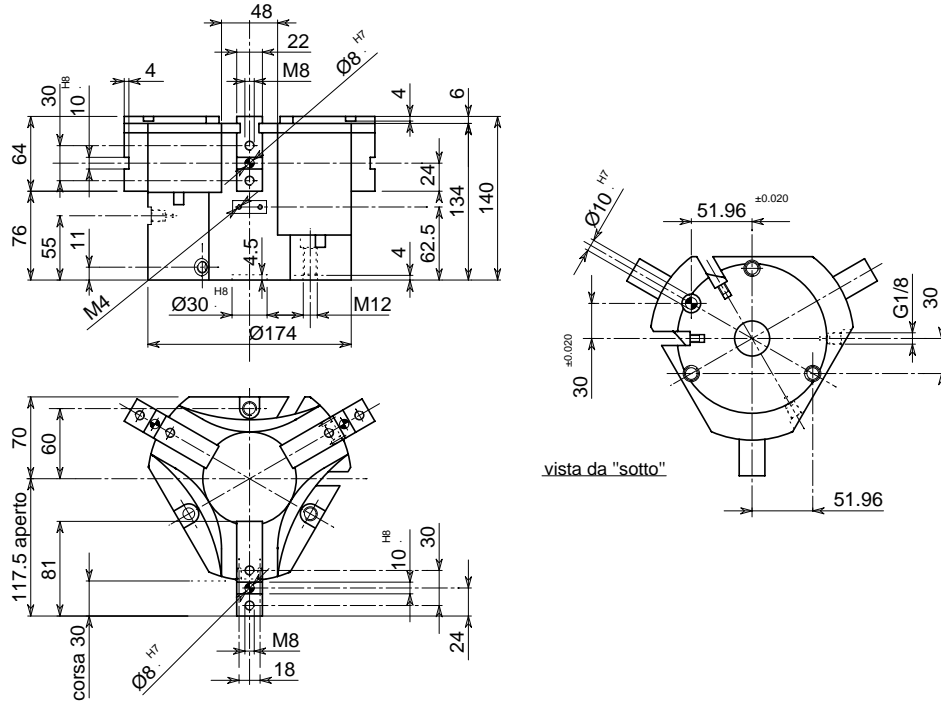
OPE 65-3
OPE 65-3 S

OPE 60-3
OPE 60-3 S

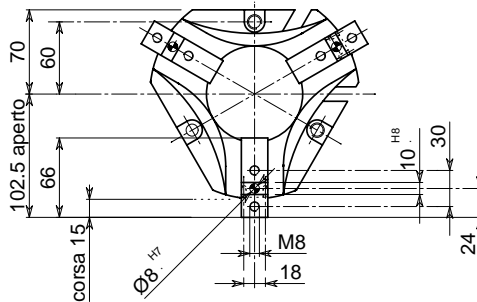


• **ORGANO DI PRESA A CORSA PARALLELA A TRE GRIFFE**
 • **Three-jaw parallel gripper**
 • **Drei-finger Parallelgreifer**
 • **Pince de préhension à course parallèle, à trois griffes**

• Disegno OPE 175-3 • Drawing OPE 175-3 • Zeichnung OPE 175-3 • Dessin OPE 175-3

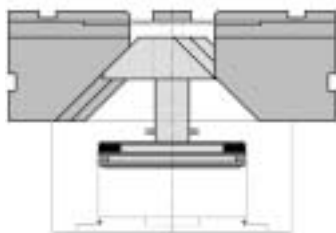


• Versione OPE 175-3 S • Version OPE 175-3 S • Ausführung OPE 175-3 S • Version OPE 175-3 S

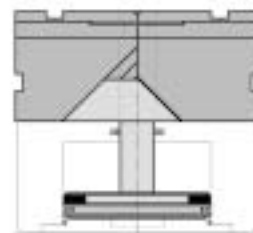


• Le dimensioni sono indicative e suscettibili di variazioni per migliorie tecniche. Ci riserviamo di apportare modifiche senza preavviso • All dimensions are indicative and subject to variation for technical upgrading. We reserve the right to make alterations without prior notification • Die Maßangaben sind indikativ und können sich bei technischen Verbesserungen ändern. Wir behalten uns vor, ohne vorherige Benachrichtigung Änderungen vorzunehmen • Les dimensions sont fournies à titre indicatif, elles peuvent subir des variations pour cause d'améliorations techniques. Nous nous réservons le droit d'apporter des modifications sans préavis.

• **SCHEMA DI FUNZIONAMENTO • OPERATIONAL DIAGRAM**
 • **BETRIEBSSCHEMA • SCHÉMA DE FONCTIONNEMENT**



Aperto
Open
Geöffnet
Ouvert



Chiuso
Closed
Geschlossen
Fermé

OPE 205-3
OPE 205-3 S

OPE 175-3
OPE 175-3 S

OPE 125-3
OPE 125-3 S

OPE 110-3
OPE 110-3 S

OPE 105-3
OPE 105-3 S

OPE 90-3
OPE 90-3 S

OPE 80-3
OPE 80-3 S

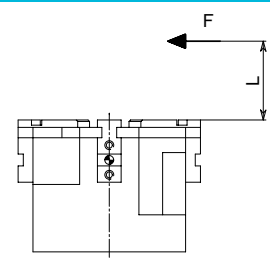
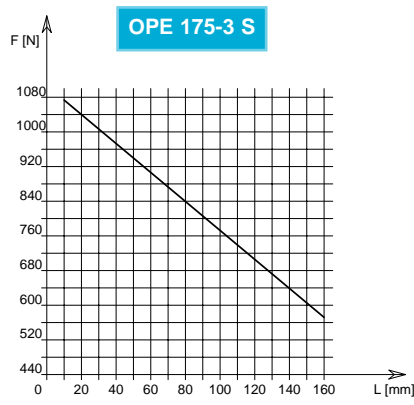
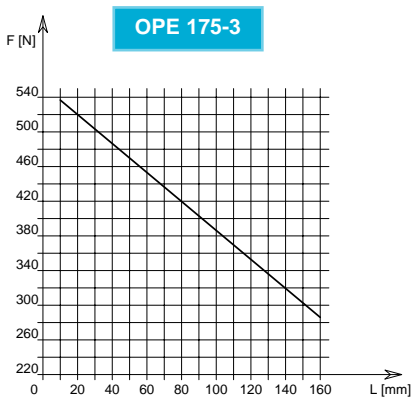
OPE 65-3
OPE 65-3 S

OPE 60-3
OPE 60-3 S



- **ORGANO DI PRESA A CORSA PARALLELA A TRE GRIFFE**
- **Three-jaw parallel gripper**
- **Drei-finger Parallelgreifer**
- **Pince de préhension à course parallèle, à trois griffes**

DIAGRAMMA FORZA DI CHIUSURA
CLAMPING FORCE DIAGRAM • DIAGRAM SCHLIEßKRAFT
DIAGRAMME DE LA FORCE DE FERMETURE



P = 6 bar

F = Forza di chiusura reale per griffa
 L = Distanza di rilevamento

F = Reelle Schließkraft pro Greiffinger
 L = Messungsabstand

F = True clamping force per jaw
 L = Reading distance

F = Force de fermeture réelle par griffe
 L = Distance de lecture

Valori nei dati tecnici rilevati alla distanza L = 20 mm • Technical specification values read at a distance L = 20 mm

• Werte der technischen Daten auf Distanz aufgenommen L = 20 mm • Valeurs des données techniques relevées à la distance L = 20 mm

DATI TECNICI

| | OPE175-3 | OPE175-3S |
|--|----------------------|----------------------|
| Corsa per griffa | .30 mm | .15 mm |
| Corsa pistone | .30 mm | .30 mm |
| Volume aria per doppia corsa | .293 cm ³ | .293 cm ³ |
| Forza teorica di chiusura per griffa a 6 bar | .942 N | .1849 N |
| Forza reale di chiusura per griffa a 6 bar | .520 N | .1047 N |
| Forza teorica di apertura per griffa a 6 bar | .1005 N | .1973 N |
| Forza reale di apertura per griffa a 6 bar | .555 N | .1089 N |
| Pressione di esercizio | .2-12 bar | .2-12 bar |
| Ripetibilità | ±0.05 mm | ±0.05 mm |
| Peso | .6.5 Kg | .6 Kg |
| Temperatura di esercizio | .5-60 °C | .5-60 °C |
| Codice articolo | .0E876PGE | .0E676PGS |

SPECIFICATIONS

| | OPE175-3 | OPE175-3S |
|---|----------------------|----------------------|
| Stroke per jaw | .30 mm | .15 mm |
| Piston stroke | .30 mm | .30 mm |
| Dual stroke air volume | .293 cm ³ | .293 cm ³ |
| Theoretical clamping force per jaw at 6 bar | .942 N | .1849 N |
| Actual clamping force per jaw at 6 bar | .520 N | .1047 N |
| Theoretical opening force per jaw at 6 bar | .1005 N | .1973 N |
| Actual opening force per jaw at 6 bar | .555 N | .1089 N |
| Working pressure | .2-12 bar | .2-12 bar |
| Reproducibility | ±0.05 mm | ±0.05 mm |
| Weight | .6.5 Kg | .6 Kg |
| Working temperature | .5-60 °C | .5-60 °C |
| Article code | .0E876PGE | .0E676PGS |

TECHNISCHE DATEN

| | OPE175-3 | OPE175-3S |
|--|----------------------|----------------------|
| Hub pro Greiffinger | .30 mm | .15 mm |
| Kolbenhub | .30 mm | .30 mm |
| Luftvolumen pro Doppelhub | .293 cm ³ | .293 cm ³ |
| Theoretische Schließkraft pro Greiffinger 6 bar | .942 N | .1849 N |
| Reelle Schließkraft pro Greiffinger 6 bar | .520 N | .1047 N |
| Theoretische Öffnungskraft pro Greiffinger 6 bar | 1005 N | .1973 N |
| Reelle Öffnungskraft pro Greiffinger 6 bar | .555 N | .1089 N |
| Betriebsdruck | .2-12 bar | .2-12 bar |
| Wiederholbarkeit | ±0.05 mm | ±0.05 mm |
| Gewicht | .6.5 Kg | .6 Kg |
| Betriebstemperatur | .5-60 °C | .5-60 °C |
| Artikelcode | .0E876PGE | .0E676PGS |

DONNÉES TECHNIQUES

| | OPE175-3 | OPE175-3S |
|---|----------------------|----------------------|
| Course par griffe | .30 mm | .15 mm |
| Course piston | .30 mm | .30 mm |
| Volume d'air pour course double | .293 cm ³ | .293 cm ³ |
| Force théorique en fermeture par griffe à 6 bar | .942 N | .1849 N |
| Force réelle en fermeture par griffe à 6 bar | .520 N | .1047 N |
| Force théorique en ouverture par griffe à 6 bar | .1005 N | .1973 N |
| Force réelle en ouverture par griffe à 6 bar | .555 N | .1089 N |
| Pression d'exercice | .2-12 bar | .2-12 bar |
| Répétibilité | ±0.05 mm | ±0.05 mm |
| Poids | .6.5 Kg | .6 Kg |
| Température d'exercice | .5-60 °C | .5-60 °C |
| Code article | .0E876PGE | .0E676PGS |

OPE 205-3
OPE 205-3 S

OPE 175-3
OPE 175-3 S

OPE 125-3
OPE 125-3 S

OPE 110-3
OPE 110-3 S

OPE 105-3
OPE 105-3 S

OPE 90-3
OPE 90-3 S

OPE 80-3
OPE 80-3 S

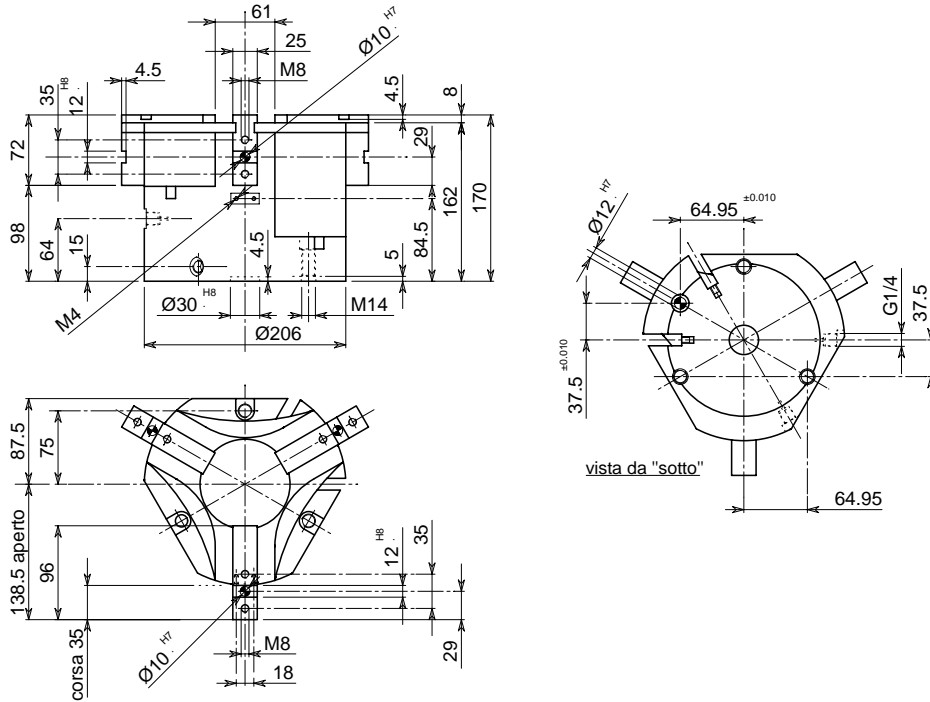
OPE 65-3
OPE 65-3 S

OPE 60-3
OPE 60-3 S

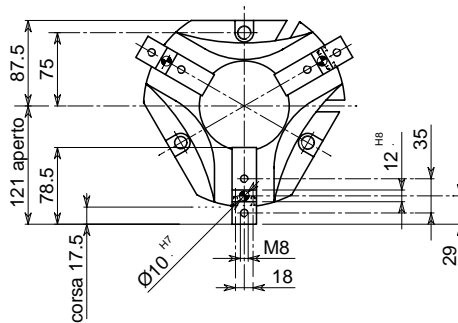


- **ORGANO DI PRESA A CORSA PARALLELA A TRE GRIFFE**
- **Three-jaw parallel gripper**
- **Drei-finger Parallelgreifer**
- **Pince de préhension à course parallèle, à trois griffes**

• Disegno OPE 205-3 • Drawing OPE 205-3 • Zeichnung OPE 205-3 • Dessin OPE 205-3

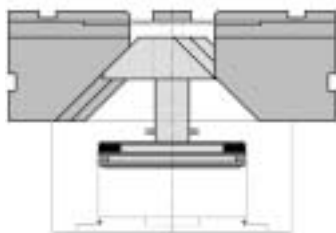


• Versione OPE 205-3 S • Version OPE 205-3 S • Ausführung OPE 205-3 S • Version OPE 205-3 S

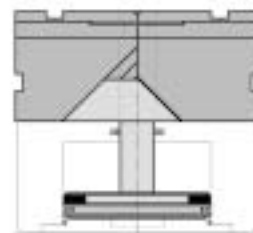


• Le dimensioni sono indicative e suscettibili di variazioni per migliorie tecniche. Ci riserviamo di apportare modifiche senza preavviso • All dimensions are indicative and subject to variation for technical upgrading. We reserve the right to make alterations without prior notification • Die Maßangaben sind indikativ und können sich bei technischen Verbesserung ändern. Wir behalten uns vor, ohne vorherige Benachrichtigung Änderungen vorzunehmen • Les dimensions sont fournies à titre indicatif, elles peuvent subir des variations pour cause d'améliorations techniques. Nous nous réservons le droit d'apporter des modifications sans préavis.

• SCHEMA DI FUNZIONAMENTO • OPERATIONAL DIAGRAM
• BETRIEBSSCHEMA • SCHÉMA DE FONCTIONNEMENT



Aperto
Open
Geöffnet
Ouvert

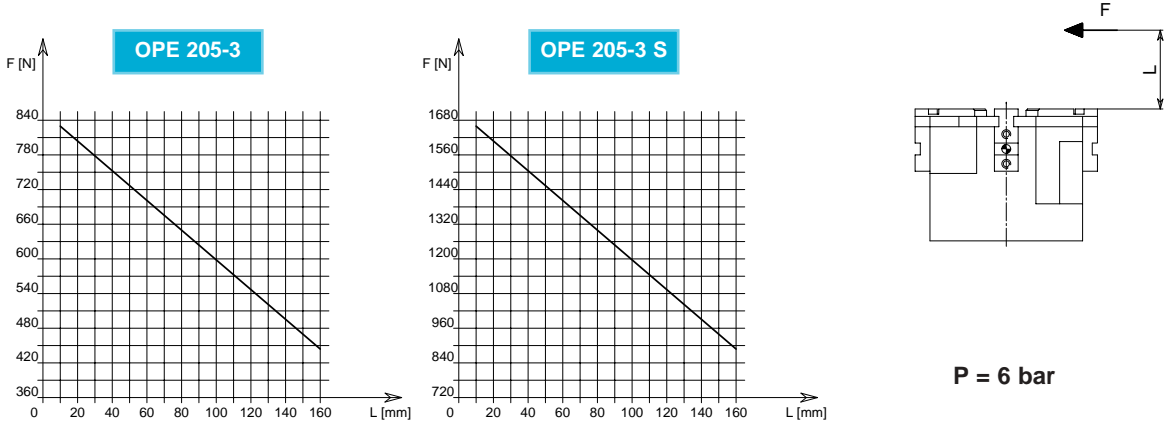


Chiuso
Closed
Geschlossen
Fermé



- **ORGANO DI PRESA A CORSA PARALLELA A TRE GRIFFE**
- **Three-jaw parallel gripper**
- **Drei-finger Parallelgreifer**
- **Pince de préhension à course parallèle, à trois griffes**

DIAGRAMMA FORZA DI CHIUSURA
CLAMPING FORCE DIAGRAM • DIAGRAM SCHLIEßKRAFT
DIAGRAMME DE LA FORCE DE FERMETURE



F = Forza di chiusura reale per griffa
 L = Distanza di rilevamento

F = True clamping force per jaw
 L = Reading distance

F = Reelle Schließkraft pro Greiffinger
 L = Messungsabstand

F = Force de fermeture réelle par griffe
 L = Distance de lecture

Valori nei dati tecnici rilevati alla distanza L = 20 mm • Technical specification values read at a distance L = 20 mm

• Werte der technischen Daten auf Distanz aufgenommen L = 20 mm • Valeurs des données techniques relevées à la distance L = 20 mm

| DATI TECNICI | OPE205-3 | OPE205-3S |
|--|----------------------|----------------------|
| Corsa per griffa | .35 mm | .17.5 mm |
| Corsa pistone | .35 mm | .35 mm |
| Volume aria per doppia corsa | .533 cm ³ | .533 cm ³ |
| Forza teorica di chiusura per griffa a 6 bar | .1470 N | .2885 N |
| Forza reale di chiusura per griffa a 6 bar | .805 N | .1580 N |
| Forza teorica di apertura per griffa a 6 bar | .1568 N | .3078 N |
| Forza reale di apertura per griffa a 6 bar | .859 N | .1686 N |
| Pressione di esercizio | .2-12 bar | .2-12 bar |
| Ripetibilità | ±0.05 mm | ±0.05 mm |
| Peso | .12 Kg | .11.5 Kg |
| Temperatura di esercizio | .5-60 °C | .5-60 °C |
| Codice articolo | .OE877PHE | .OE677PHS |

| SPECIFICATIONS | OPE205-3 | OPE205-3S |
|---|----------------------|----------------------|
| Stroke per jaw | .35 mm | .17.5 mm |
| Piston stroke | .35 mm | .35 mm |
| Dual stroke air volume | .533 cm ³ | .533 cm ³ |
| Theoretical clamping force per jaw at 6 bar | .1470 N | .2885 N |
| Actual clamping force per jaw at 6 bar | .805 N | .1580 N |
| Theoretical opening force per jaw at 6 bar | .1568 N | .3078 N |
| Actual opening force per jaw at 6 bar | .859 N | .1686 N |
| Working pressure | .2-12 bar | .2-12 bar |
| Reproducibility | ±0.05 mm | ±0.05 mm |
| Weight | .12 Kg | .11.5 Kg |
| Working temperature | .5-60 °C | .5-60 °C |
| Article code | .OE877PHE | .OE677PHS |

| TECHNISCHE DATEN | OPE205-3 | OPE205-3S |
|--|----------------------|----------------------|
| Hub pro Greiffinger | .35 mm | .17.5 mm |
| Kolbenhub | .35 mm | .35 mm |
| Luftvolumen pro Doppelhub | .533 cm ³ | .533 cm ³ |
| Theoretische Schließkraft pro Greiffinger 6 bar | .1470 N | .2885 N |
| Reelle Schließkraft pro Greiffinger 6 bar | .805 N | .1580 N |
| Theoretische Öffnungskraft pro Greiffinger 6 bar | .1568 N | .3078 N |
| Reelle Öffnungskraft pro Greiffinger 6 bar | .859 N | .1686 N |
| Betriebsdruck | .2-12 bar | .2-12 bar |
| Wiederholbarkeit | ±0.05 mm | ±0.05 mm |
| Gewicht | .12 Kg | .11.5 Kg |
| Betriebstemperatur | .5-60 °C | .5-60 °C |
| Artikelcode | .OE877PHE | .OE677PHS |

| DONNÉES TECHNIQUES | OPE205-3 | OPE205-3S |
|---|----------------------|----------------------|
| Course par griffe | .35 mm | .17.5 mm |
| Course piston | .35 mm | .35 mm |
| Volume d'air pour course double | .533 cm ³ | .533 cm ³ |
| Force théorique en fermeture par griffe à 6 bar | .1470 N | .2885 N |
| Force réelle en fermeture par griffe à 6 bar | .805 N | .1580 N |
| Force théorique en ouverture par griffe à 6 bar | .1568 N | .3078 N |
| Force réelle en ouverture par griffe à 6 bar | .859 N | .1686 N |
| Pression d'exercice | .2-12 bar | .2-12 bar |
| Répétibilité | ±0.05 mm | ±0.05 mm |
| Poids | .12 Kg | .11.5 Kg |
| Température d'exercice | .5-60 °C | .5-60 °C |
| Code article | .OE877PHE | .OE677PHS |

OPE 205-3
OPE 205-3 S

OPE 175-3
OPE 175-3 S

OPE 125-3
OPE 125-3 S

OPE 110-3
OPE 110-3 S

OPE 105-3
OPE 105-3 S

OPE 90-3
OPE 90-3 S

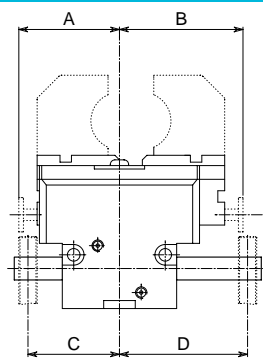
OPE 80-3
OPE 80-3 S

OPE 65-3
OPE 65-3 S

OPE 60-3
OPE 60-3 S

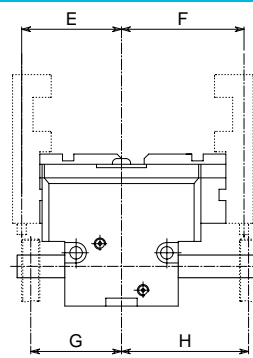
- **CONTROLLO POSIZIONE APERTO-CHIUSO CON SENSORI (PROXIMITY) ESTERNI**
- **Open-closed control position with external proximity switches**
- **Positionskontrolle "geöffnet"- "geschlossen mit kontaktlosen Sensoren**
- **Contrôle de la position ouvert-fermé avec détecteurs extérieurs (de proximité)**

- **SCHEMA CON FISSAGGIO SUPERIORE**
- **Top fixing diagram**
- **Oberseiteinspannung schema**
- **Schéma de fixation supérieure**



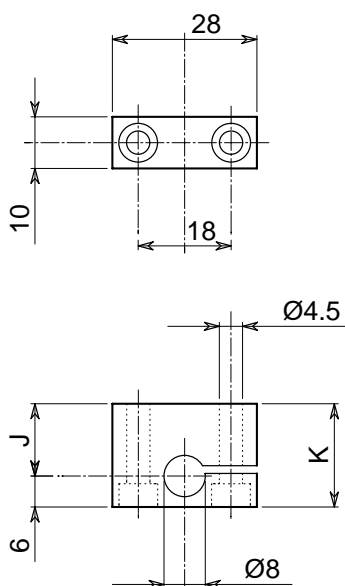
| Sigla - Code Bezeichnung Sigle | A | B | C | D |
|--------------------------------------|----|------|----|------|
| OPE 50 | 33 | 38 | 29 | 40 |
| OPE 60 | 37 | 44.5 | 33 | 46.5 |
| OPE 70 | 44 | 54 | 40 | 56 |
| OPE 80 | 48 | 60 | 44 | 62 |
| OPE 100 | 60 | 70 | 56 | 72 |

- **SCHEMA CON FISSAGGIO LATERALE**
- **Side fixing diagram**
- **Seiteinspannung schema**
- **Schéma de fixation sur le côté**



| Sigla - Code Bezeichnung Sigle | A | B | C | D |
|--------------------------------------|----|-------|----|-------|
| OPE 50 S | 33 | 35.5 | 29 | 37.5 |
| OPE 60 S | 37 | 40.75 | 33 | 42.75 |
| OPE 70 S | 44 | 49 | 40 | 51 |
| OPE 80 S | 48 | 54 | 44 | 56 |
| OPE 100 S | 60 | 65 | 56 | 67 |

- **STAFFA PORTA MICRO DI CONTROLLO**
- **Control microswitch bracket**
- **Haltebügel Kontrollmikroschalter**
- **Etrier porte micro de contrôle**



Controllo chiuso
Closed control
Contrôle fermé
Kontrolle geöffnet

| Sigla Code Bezeichnung Sigle | Codice Article code Artikelcode Code article | |
|---------------------------------------|---|------|
| | J | K |
| OPE 50 | 7 | 13 |
| OPE 60 | 8 | 14 |
| OPE 70 | 15 | 21 |
| OPE 80 | 13 | 19 |
| OPE 100 | 6.5 | 12.5 |
| OPE 50 S | 7 | 13 |
| OPE 60 S | 8 | 14 |
| OPE 70 S | 15 | 21 |
| OPE 80 S | 13 | 19 |
| OPE 100 S | 6.5 | 12.5 |

Controllo aperto
Open control
Contrôle ouvert
Kontrolle geschlossen

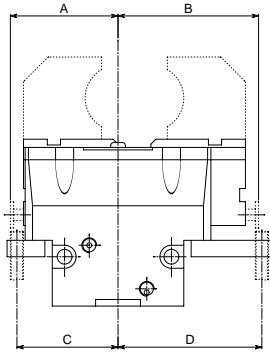
| Sigla Code Bezeichnung Sigle | Codice Article code Artikelcode Code article | |
|---------------------------------------|---|-------|
| | J | K |
| OPE 50 | 18 | 24 |
| OPE 60 | 21.5 | 27.5 |
| OPE 70 | 31 | 37 |
| OPE 80 | 31 | 37 |
| OPE 100 | 22.5 | 28.5 |
| OPE 50 S | 15.5 | 21.5 |
| OPE 60 S | 17.75 | 23.75 |
| OPE 70 S | 26 | 32 |
| OPE 80 S | 25 | 31 |
| OPE 100 S | 17.5 | 23.5 |

• Le dimensioni sono indicative e suscettibili di variazioni per migliorie tecniche. Ci riserviamo di apportare modifiche senza preavviso • All dimensions are indicative and subject to variation for technical upgrading. We reserve the right to make alterations without prior notification • Die Maßangaben sind indikativ und können sich bei technischen Verbesserungen ändern. Wir behalten uns vor, ohne vorherige Benachrichtigung Änderungen vorzunehmen • Les dimensions sont fournies à titre indicatif, elles peuvent subir des variations pour cause d'améliorations techniques. Nous nous réservons le droit d'apporter des modifications sans préavis.



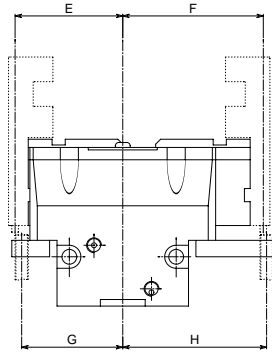
• CONTROLLO POSIZIONE APERTO-CHIUSO CON SENSORI (PROXIMITY) ESTERNI
• Open-closed control position with external proximity switches
• Positionskontrolle "geöffnet"- "geschlossen mit kontaktlosen Sensoren
• Contrôle de la position ouvert-fermé avec détecteurs extérieurs (de proximité)

• SCHEMA CON FISSAGGIO SUPERIORE
 • Top fixing diagram
 • Oberseiteinspannung schema
 • Schéma de fixation supérieur



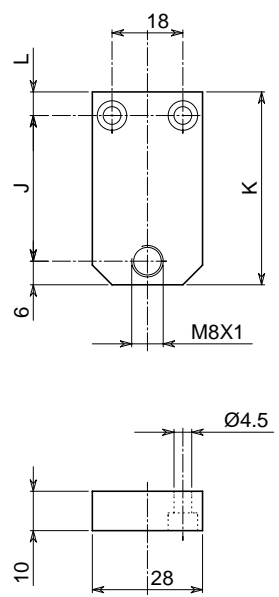
| Sigla - Code Bezeichnung Sigle | A | B | C | D |
|--------------------------------------|------|------|------|------|
| OPE 95 | 55 | 70 | 51 | 72 |
| OPE 115 | 65.5 | 85.5 | 61.5 | 87.5 |
| OPE 160 | 89 | 119 | 85 | 121 |
| OPE 190 | 104 | 139 | 100 | 141 |
| OPE 210 | 114 | 154 | 110 | 156 |

• SCHEMA CON FISSAGGIO LATERALE
 • Side fixing diagram
 • Seiteinspannung schema
 • Schéma de fixation sur le côté



| Sigla - Code Bezeichnung Sigle | A | B | C | D |
|--------------------------------------|------|-------|------|-------|
| OPE 95 S | 55 | 62.5 | 51 | 64.5 |
| OPE 115 S | 65.5 | 75.5 | 61.5 | 77.5 |
| OPE 160 S | 89 | 104 | 85 | 106 |
| OPE 190 S | 104 | 121.5 | 100 | 123.5 |
| OPE 210 S | 114 | 134 | 110 | 136 |

• STAFFA PORTA MICRO DI CONTROLLO
 • Control microswitch bracket
 • Haltebügel Kontrollmikroschalter
 • Etrier porte micro de contrôle



Controllo chiuso
 Closed control
 Contrôle fermé
 Kontrolle geöffnet

| Sigla Code Bezeichnung Sigle | J | K | L | Codice Article code Artikelcode Code article |
|---------------------------------------|----|----|---|---|
| OPE 95 | 11 | 22 | 5 | SC955CCH |
| OPE 115 | 11 | 23 | 6 | SC115CCH |
| OPE 160 | 11 | 23 | 6 | SC115CCH |
| OPE 190 | 11 | 23 | 6 | SC115CCH |
| OPE 210 | 11 | 23 | 6 | SC115CCH |
| OPE 95 S | 11 | 22 | 5 | SC955SCH |
| OPE 115 S | 11 | 23 | 6 | SC115CCH |
| OPE 160 S | 11 | 23 | 6 | SC115CCH |
| OPE 190 S | 11 | 23 | 6 | SC115CCH |
| OPE 210 S | 11 | 23 | 6 | SC115CCH |

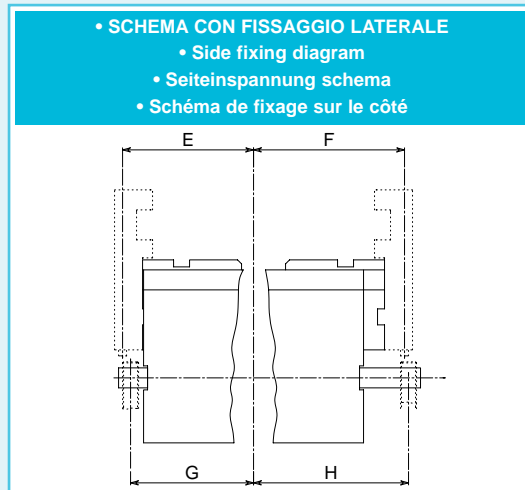
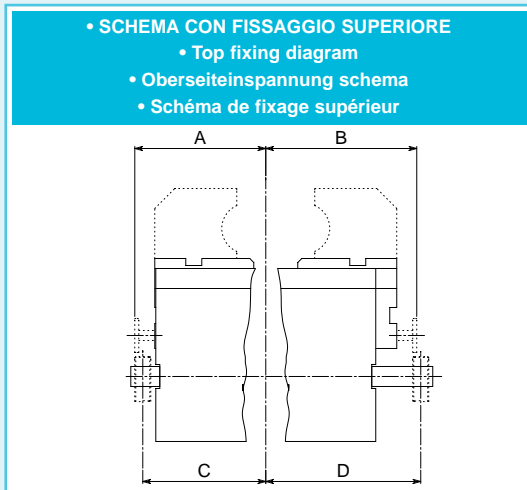
Controllo aperto
 Open control
 Contrôle ouvert
 Kontrolle geschlossen

| Sigla Code Bezeichnung Sigle | J | K | L | Codice Article code Artikelcode Code article |
|---------------------------------------|------|------|---|---|
| OPE 95 | 32 | 43 | 5 | SC955CAP |
| OPE 115 | 37 | 49 | 6 | SC115CAP |
| OPE 160 | 47 | 59 | 6 | SC168CAP |
| OPE 190 | 52 | 64 | 6 | SC198CAP |
| OPE 210 | 57 | 69 | 6 | SC210CAP |
| OPE 95 S | 24.5 | 35.5 | 5 | SC955SAP |
| OPE 115 S | 27 | 39 | 6 | SC115SAP |
| OPE 160 S | 32 | 44 | 6 | SC168SAP |
| OPE 190 S | 34.5 | 46.5 | 6 | SC198SAP |
| OPE 210 S | 37 | 49 | 6 | SC115CAP |

• Le dimensioni sono indicative e suscettibili di variazioni per migliorie tecniche. Ci riserviamo di apportare modifiche senza preavviso • All dimensions are indicative and subject to variation for technical upgrading. We reserve the right to make alterations without prior notification • Die Maßangaben sind indikativ und können sich bei technischen Verbesserung ändern. Wir behalten uns vor, ohne vorherige Benachrichtigung Änderungen vorzunehmen • Les dimensions sont fournies à titre indicatif, elles peuvent subir des variations pour cause d'améliorations techniques. Nous nous réservons le droit d'apporter des modifications sans préavis.

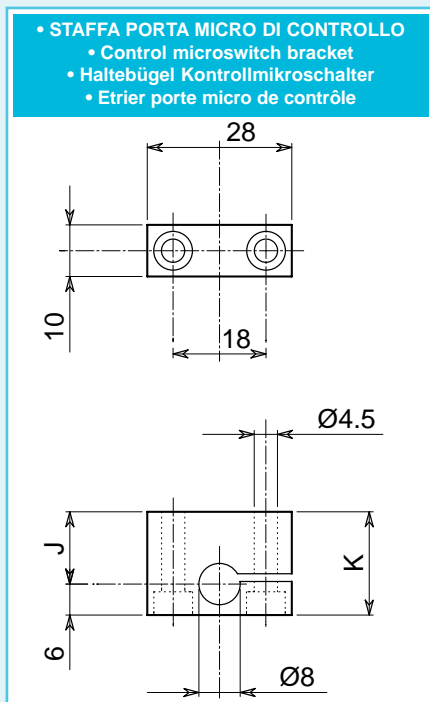
• ORGANI DI PRESA A CORSA PARALLELA A DUE GRIFFE OPE • Two-jaw parallel grippers OPE
• Zwei-finger Parallelgreifer OPE • Pinces de préhension à course parallèle, à deux griffes OPE

- **CONTROLLO POSIZIONE APERTO-CHIUSO CON SENSORI (PROXIMITY) ESTERNI**
- **Open-closed control position with external proximity switches**
- **Positionskontrolle "geöffnet"- "geschlossen mit kontaktlosen Sensoren**
- **Contrôle de la position ouvert-fermé avec détecteurs extérieurs (de proximité)**



| Sigla - Code Bezeichnung Sigle | A | B | C | D |
|--------------------------------------|-------|-------|-------|-------|
| OPE 60-3 | 39 | 44 | 35 | 46 |
| OPE 65-3 | 43.5 | 51 | 39.5 | 53 |
| OPE 80-3 | 50.5 | 60.5 | 46.5 | 62.5 |
| OPE 90-3 | 55 | 67 | 51 | 69 |
| OPE 105-3 | 62 | 77 | 58 | 79 |
| OPE 110-3 | 65.5 | 75.5 | 61.5 | 77.5 |
| OPE 125-3 | 73 | 93 | 69 | 95 |
| OPE 175-3 | 97.5 | 127.5 | 93.5 | 129.5 |
| OPE 205-3 | 113.5 | 148.5 | 109.5 | 150.5 |

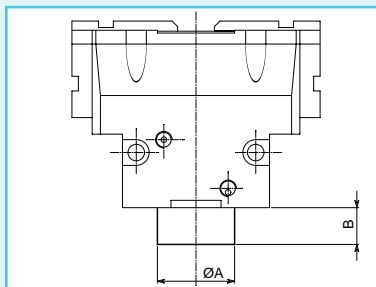
| Sigla - Code Bezeichnung Sigle | A | B | C | D |
|--------------------------------------|-------|-------|-------|-------|
| OPE 60-3 S | 39 | 41.5 | 35 | 43.5 |
| OPE 65-3 S | 43.5 | 47.25 | 39.5 | 49.25 |
| OPE 80-3 S | 50.5 | 55.5 | 46.5 | 57.5 |
| OPE 90-3 S | 55 | 61 | 51 | 63 |
| OPE 105-3 S | 62 | 69.5 | 58 | 71.5 |
| OPE 110-3 S | 65.5 | 70.5 | 61.5 | 72.5 |
| OPE 125-3 S | 73 | 83 | 69 | 85 |
| OPE 175-3 S | 97.5 | 112.5 | 93.5 | 114.5 |
| OPE 205-3 S | 113.5 | 131.5 | 109.5 | 133 |



| Sigla Code Bezeichnung Sigle | Controllo chiuso Closed control Contrôle fermé Kontrolle geöffnet | | Controllo aperto Open control Contrôle ouvert Kontrolle geschlossen | | Codice Aricle code Artikelcode Code article |
|---------------------------------------|--|------|--|-------|--|
| | J | K | J | K | |
| OPE 60-3 | 10.5 | 16.5 | 21.5 | 27.5 | SC603CCH |
| OPE 65-3 | 10 | 16 | 23.5 | 29.5 | SC654CCH |
| OPE 80-3 | 9.5 | 15.5 | 25.5 | 31.5 | SC843CCH |
| OPE 90-3 | 9 | 15 | 27 | 33 | SC945CCH |
| OPE 105-3 | 8.5 | 14.5 | 29.5 | 35.5 | SC105CCH |
| OPE 110-3 | 8.5 | 14.5 | 24.5 | 30.5 | SC105CCH |
| OPE 125-3 | 8 | 14 | 34 | 40 | SC603CCH |
| OPE 175-3 | 8 | 14 | 44 | 50 | SC603CCH |
| OPE 205-3 | 7.5 | 13.5 | 48.5 | 54.5 | SC205CCH |
| OPE 60-3 S | 10.5 | 16.5 | 19 | 25 | SC603CCH |
| OPE 65-3 S | 10 | 16 | 19.75 | 25.75 | SC654CCH |
| OPE 80-3 S | 9.5 | 15.5 | 20.5 | 26.5 | SC843CCH |
| OPE 90-3 S | 9 | 15 | 21 | 27 | SC945CCH |
| OPE 105-3 S | 8.5 | 14.5 | 22 | 28 | SC105CCH |
| OPE 110-3 S | 8.5 | 14.5 | 19.5 | 25.5 | SC105CCH |
| OPE 125-3 S | 8 | 14 | 24 | 30 | SC603CCH |
| OPE 175-3 S | 8 | 14 | 29 | 35 | SC603CCH |
| OPE 205-3 S | 7.5 | 13.5 | 31 | 37 | SC205CCH |

• Le dimensioni sono indicative e suscettibili di variazioni per migliorie tecniche. Ci riserviamo di apportare modifiche senza preavviso • All dimensions are indicative and subject to variation for technical upgrading. We reserve the right to make alterations without prior notification • Die Maßangaben sind indikativ und können sich bei technischen Verbesserung ändern. Wir behalten uns vor, ohne vorherige Benachrichtigung Änderungen vorzunehmen • Les dimensions sont fournies à titre indicatif, elles peuvent subir des variations pour cause d'améliorations techniques. Nous nous réservons le droit d'apporter des modifications sans préavis.

- **DISPOSITIVO DI SICUREZZA CON MOLLA**
- **Safety device with spring**
- **Sicherheits-vorrichtung mit Feder**
- **Dispositif de sécurité avec ressort**



| SIGLA | A | B | Forza reale di chiusura per griffa con sola molla - N | Forza totale reale di chiusura per griffa a 6 bar - N (a pinza chiusa) | Peso Kg | Press. min. bar | Press. max. bar | CODICE |
|------------|----|----|---|--|---------|-----------------|-----------------|----------|
| OPE 50 CM | 18 | 12 | 9 - 19 | 64 | 0.26 | 3 | 10 | OE770NRE |
| OPE 60 CM | 22 | 15 | 15 - 29 | 92 | 0.44 | 3 | 10 | OE771NBE |
| OPE 70 CM | 22 | 15 | 15 - 34 | 92 | 0.51 | 3 | 10 | OE772NCE |
| OPE 80 CM | 28 | 18 | 26 - 52 | 137 | 0.62 | 3.5 | 10 | OE773NDE |
| OPE 95 CM | 32 | 22 | 34 - 74 | 184 | 1.05 | 4 | 10 | OE774NEE |
| OPE 100 CM | 55 | 22 | 133 - 201 | 777 | 2.1 | 3 | 10 | OE779MLE |
| OPE 115 CM | 42 | 25 | 53 - 88 | 307 | 2 | 3 | 10 | OE775NFE |
| OPE 160 CM | 55 | 26 | 80 - 210 | 594 | 3.85 | 3.5 | 10 | OE776MGE |
| OPE 190 CM | 65 | 35 | 111 - 300 | 735 | 7.1 | 4 | 10 | OE777NHE |
| OPE 210 CM | 74 | 40 | 130 - 242 | 976 | 11.1 | 3 | 10 | OE778NIE |

| CODE | A | B | True clamping force per jaw only with spring - N | Total true clamping force per jaw to 6 bar N (with closed gripper) | Weight Kg | Min pressure bar | Max pressure bar | ARTICLE CODE |
|------------|----|----|--|--|-----------|------------------|------------------|--------------|
| OPE 50 CM | 18 | 12 | 9 - 19 | 64 | 0.26 | 3 | 10 | OE770NRE |
| OPE 60 CM | 22 | 15 | 15 - 29 | 92 | 0.44 | 3 | 10 | OE771NBE |
| OPE 70 CM | 22 | 15 | 15 - 34 | 92 | 0.51 | 3 | 10 | OE772NCE |
| OPE 80 CM | 28 | 18 | 26 - 52 | 137 | 0.62 | 3.5 | 10 | OE773NDE |
| OPE 95 CM | 32 | 22 | 34 - 74 | 184 | 1.05 | 4 | 10 | OE774NEE |
| OPE 100 CM | 55 | 22 | 133 - 201 | 777 | 2.1 | 3 | 10 | OE779MLE |
| OPE 115 CM | 42 | 25 | 53 - 88 | 307 | 2 | 3 | 10 | OE775NFE |
| OPE 160 CM | 55 | 26 | 80 - 210 | 594 | 3.85 | 3.5 | 10 | OE776MGE |
| OPE 190 CM | 65 | 35 | 111 - 300 | 735 | 7.1 | 4 | 10 | OE777NHE |
| OPE 210 CM | 74 | 40 | 130 - 242 | 976 | 11.1 | 3 | 10 | OE778NIE |

| BEZEICHNUNG | A | B | Reele Schliesskraft pro Backe nur mit Feder - N | Reele Gesamtschliesskraft pro Backe (mit geschlossenem Greifer 6 bar - N) | Gewicht Kg | Min Druck bar | Max Druck bar | ARTIKEL CODE |
|-------------|----|----|---|---|------------|---------------|---------------|--------------|
| OPE 50 CM | 18 | 12 | 9 - 19 | 64 | 0.26 | 3 | 10 | OE770NRE |
| OPE 60 CM | 22 | 15 | 15 - 29 | 92 | 0.44 | 3 | 10 | OE771NBE |
| OPE 70 CM | 22 | 15 | 15 - 34 | 92 | 0.51 | 3 | 10 | OE772NCE |
| OPE 80 CM | 28 | 18 | 26 - 52 | 137 | 0.62 | 3.5 | 10 | OE773NDE |
| OPE 95 CM | 32 | 22 | 34 - 74 | 184 | 1.05 | 4 | 10 | OE774NEE |
| OPE 100 CM | 55 | 22 | 133 - 201 | 777 | 2.1 | 3 | 10 | OE779MLE |
| OPE 115 CM | 42 | 25 | 53 - 88 | 307 | 2 | 3 | 10 | OE775NFE |
| OPE 160 CM | 55 | 26 | 80 - 210 | 594 | 3.85 | 3.5 | 10 | OE776MGE |
| OPE 190 CM | 65 | 35 | 111 - 300 | 735 | 7.1 | 4 | 10 | OE777NHE |
| OPE 210 CM | 74 | 40 | 130 - 242 | 976 | 11.1 | 3 | 10 | OE778NIE |

| SIGLE | A | B | Force réelle en fermeture par griffe seulement avec ressort - N | Totale force réelle en fermeture par griffe 6 bar N (avec la pince fermée) | Poids Kg | Min press. bar | Max press. bar | CODE ARTICLE |
|------------|----|----|---|--|----------|----------------|----------------|--------------|
| OPE 50 CM | 18 | 12 | 9 - 19 | 64 | 0.26 | 3 | 10 | OE770NRE |
| OPE 60 CM | 22 | 15 | 15 - 29 | 92 | 0.44 | 3 | 10 | OE771NBE |
| OPE 70 CM | 22 | 15 | 15 - 34 | 92 | 0.51 | 3 | 10 | OE772NCE |
| OPE 80 CM | 28 | 18 | 26 - 52 | 137 | 0.62 | 3.5 | 10 | OE773NDE |
| OPE 95 CM | 32 | 22 | 34 - 74 | 184 | 1.05 | 4 | 10 | OE774NEE |
| OPE 100 CM | 55 | 22 | 133 - 201 | 777 | 2.1 | 3 | 10 | OE779MLE |
| OPE 115 CM | 42 | 25 | 53 - 88 | 307 | 2 | 3 | 10 | OE775NFE |
| OPE 160 CM | 55 | 26 | 80 - 210 | 594 | 3.85 | 3.5 | 10 | OE776MGE |
| OPE 190 CM | 65 | 35 | 111 - 300 | 735 | 7.1 | 4 | 10 | OE777NHE |
| OPE 210 CM | 74 | 40 | 130 - 242 | 976 | 11.1 | 3 | 10 | OE778NIE |

Nota: versione con molla in chiusura, su richiesta fornibile con molla in apertura

Note: type with spring in clamping, on request available with spring in opening

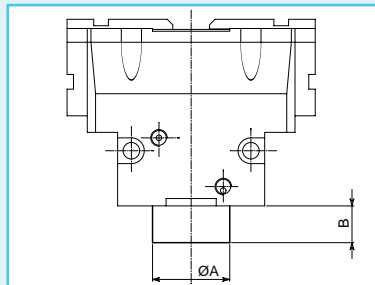
Anmerkung: Typ mit Feder in Geöfnung, nach Frage mit Feder in Öffnung

Note: type avec ressort en fermeture, sur demande ou peut le fournir avec ressort en ouverture

• Le dimensioni sono indicative e suscettibili di variazioni per migliorie tecniche. Ci riserviamo di apportare modifiche senza preavviso • All dimensions are indicative and subject to variation for technical upgrading. We reserve the right to make alterations without prior notification • Die Maßangaben sind indikativ und können sich bei technischen Verbesserung ändern. Wir behalten uns vor, ohne vorherige Benachrichtigung Änderungen vorzunehmen • Les dimensions sont fournies à titre indicatif, elles peuvent subir des variations pour cause d'améliorations techniques. Nous nous réservons le droit d'apporter des modifications sans préavis.

• **ORGANI DI PRESA A CORSA PARALLELA A DUE GRIFFE OPE • Two-jaw parallel grippers OPE**
 • **Zwei-finger Parallelgreifer OPE • Pincas de préhension à course parallèle, à deux griffes OPE**

- **DISPOSITIVO DI SICUREZZA CON MOLLA**
- **Safety device with spring**
- **Sicherheits-vorrichtung mit Feder**
- **Dispositif de sécurité avec ressort**



| SIGLA | A | B | Forza reale di chiusura per griffa con sola molla - N | Forza totale reale di chiusura per griffa a 6 bar - N (a pinza chiusa) | Peso Kg | Press. min. bar | Press. max. bar | CODICE |
|-------------|----|----|---|--|---------|-----------------|-----------------|----------|
| OPE 50 SCM | 18 | 12 | 15 - 31 | 105 | 0.26 | 3 | 10 | OE970NRS |
| OPE 60 SCM | 22 | 15 | 29 - 57 | 182 | 0.44 | 3 | 10 | OE971NBS |
| OPE 70 SCM | 22 | 15 | 29 - 66 | 182 | 0.51 | 3 | 10 | OE972NCS |
| OPE 80 SCM | 28 | 18 | 51 - 101 | 268 | 0.62 | 3.5 | 10 | OE973NDS |
| OPE 95 SCM | 32 | 22 | 66 - 147 | 361 | 1.05 | 4 | 10 | OE974NES |
| OPE 100 SCM | 55 | 22 | 260 - 395 | 1524 | 2.1 | 3 | 10 | OE979MLS |
| OPE 115 SCM | 42 | 25 | 105 - 174 | 602 | 2 | 3 | 10 | OE975NFS |
| OPE 160 SCM | 55 | 26 | 156 - 411 | 1167 | 3.85 | 3.5 | 10 | OE976MGS |
| OPE 190 SCM | 65 | 35 | 218 - 588 | 1442 | 7.1 | 4 | 10 | OE977NHS |
| OPE 210 SCM | 74 | 40 | 255 - 474 | 1915 | 11.1 | 3 | 10 | OE978NIS |

| CODE | A | B | True clamping force per jaw only with spring - N | Total true clamping force per jaw to 6 bar N (with closed gripper) | Weight Kg | Min pressure bar | Max pressure bar | ARTICLE CODE |
|-------------|----|----|--|--|-----------|------------------|------------------|--------------|
| OPE 50 SCM | 18 | 12 | 15 - 31 | 105 | 0.26 | 3 | 10 | OE970NRS |
| OPE 60 SCM | 22 | 15 | 29 - 57 | 182 | 0.44 | 3 | 10 | OE971NBS |
| OPE 70 SCM | 22 | 15 | 29 - 66 | 182 | 0.51 | 3 | 10 | OE972NCS |
| OPE 80 SCM | 28 | 18 | 51 - 101 | 268 | 0.62 | 3.5 | 10 | OE973NDS |
| OPE 95 SCM | 32 | 22 | 66 - 147 | 361 | 1.05 | 4 | 10 | OE974NES |
| OPE 100 SCM | 55 | 22 | 260 - 395 | 1524 | 2.1 | 3 | 10 | OE979MLS |
| OPE 115 SCM | 42 | 25 | 105 - 174 | 602 | 2 | 3 | 10 | OE975NFS |
| OPE 160 SCM | 55 | 26 | 156 - 411 | 1167 | 3.85 | 3.5 | 10 | OE976MGS |
| OPE 190 SCM | 65 | 35 | 218 - 588 | 1442 | 7.1 | 4 | 10 | OE977NHS |
| OPE 210 SCM | 74 | 40 | 255 - 474 | 1915 | 11.1 | 3 | 10 | OE978NIS |

| BEZEICHNUNG | A | B | Reele Schliesskraft pro Backe nur mit Feder - N | Reele Gesamtschliesskraft pro Backe (mit geschlossenen Greifer 6 bar - N) | Gewicht Kg | Min Druck bar | Max Druck bar | ARTIKEL CODE |
|-------------|----|----|---|---|------------|---------------|---------------|--------------|
| OPE 50 SCM | 18 | 12 | 15 - 31 | 105 | 0.26 | 3 | 10 | OE970NRS |
| OPE 60 SCM | 22 | 15 | 29 - 57 | 182 | 0.44 | 3 | 10 | OE971NBS |
| OPE 70 SCM | 22 | 15 | 29 - 66 | 182 | 0.51 | 3 | 10 | OE972NCS |
| OPE 80 SCM | 28 | 18 | 51 - 101 | 268 | 0.62 | 3.5 | 10 | OE973NDS |
| OPE 95 SCM | 32 | 22 | 66 - 147 | 361 | 1.05 | 4 | 10 | OE974NES |
| OPE 100 SCM | 55 | 22 | 260 - 395 | 1524 | 2.1 | 3 | 10 | OE979MLS |
| OPE 115 SCM | 42 | 25 | 105 - 174 | 602 | 2 | 3 | 10 | OE975NFS |
| OPE 160 SCM | 55 | 26 | 156 - 411 | 1167 | 3.85 | 3.5 | 10 | OE976MGS |
| OPE 190 SCM | 65 | 35 | 218 - 588 | 1442 | 7.1 | 4 | 10 | OE977NHS |
| OPE 210 SCM | 74 | 40 | 255 - 474 | 1915 | 11.1 | 3 | 10 | OE978NIS |

| SIGLE | A | B | Force réelle en fermeture par griffe seulement avec ressort - N | Totale force réelle en fermeture par griffe 6 bar N (avec la pince fermée) | Poids Kg | Min press. bar | Max press. bar | CODE ARTICLE |
|-------------|----|----|---|--|----------|----------------|----------------|--------------|
| OPE 50 SCM | 18 | 12 | 15 - 31 | 105 | 0.26 | 3 | 10 | OE970NRS |
| OPE 60 SCM | 22 | 15 | 29 - 57 | 182 | 0.44 | 3 | 10 | OE971NBS |
| OPE 70 SCM | 22 | 15 | 29 - 66 | 182 | 0.51 | 3 | 10 | OE972NCS |
| OPE 80 SCM | 28 | 18 | 51 - 101 | 268 | 0.62 | 3.5 | 10 | OE973NDS |
| OPE 95 SCM | 32 | 22 | 66 - 147 | 361 | 1.05 | 4 | 10 | OE974NES |
| OPE 100 SCM | 55 | 22 | 260 - 395 | 1524 | 2.1 | 3 | 10 | OE979MLS |
| OPE 115 SCM | 42 | 25 | 105 - 174 | 602 | 2 | 3 | 10 | OE975NFS |
| OPE 160 SCM | 55 | 26 | 156 - 411 | 1167 | 3.85 | 3.5 | 10 | OE976MGS |
| OPE 190 SCM | 65 | 35 | 218 - 588 | 1442 | 7.1 | 4 | 10 | OE977NHS |
| OPE 210 SCM | 74 | 40 | 255 - 474 | 1915 | 11.1 | 3 | 10 | OE978NIS |

Nota: versione con molla in chiusura, su richiesta fornibile con molla in apertura

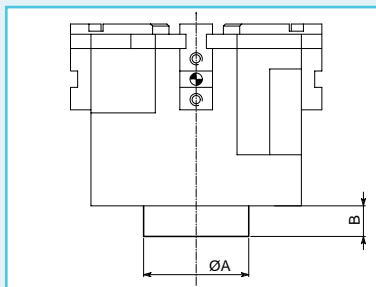
Note: type with spring in clamping, on request available with spring in opening

Anmerkung: Typ mit Feder in Geöfnung, nach Frage mit Feder in Öffnung

Note: type avec ressort en fermeture, sur demande ou peut le fournir avec ressort en ouverture

• Le dimensioni sono indicative e suscettibili di variazioni per migliorie tecniche. Ci riserviamo di apportare modifiche senza preavviso • All dimensions are indicative and subject to variation for technical upgrading. We reserve the right to make alterations without prior notification • Die Maßangaben sind inklinativ und können sich bei technischen Verbesserungen ändern. Wir behalten uns vor, ohne vorherige Benachrichtigung, Änderungen vorzunehmen • Les dimensions sont fournies à titre indicatif; elles peuvent subir des variations pour cause d'améliorations techniques. Nous nous réservons le droit d'apporter des modifications sans préavis.

- **DISPOSITIVO DI SICUREZZA CON MOLLA**
- **Safety device with spring**
- **Sicherheits-vorrichtung mit Feder**
- **Dispositif de sécurité avec ressort**



| SIGLA | A | B | Forza reale di chiusura per griffa con sola molla - N | Forza totale reale di chiusura per griffa a 6 bar - N (a pinza chiusa) | Peso Kg | Press. min. bar | Press. max. bar | CODICE |
|--------------|----|------|---|--|---------|-----------------|-----------------|----------|
| OPE 60-3 CM | 30 | 14 | 15 - 19 | 96 | 0.67 | 3 | 10 | OE870NRE |
| OPE 65-3 CM | 35 | 16.5 | 20 - 30 | 147 | 0.78 | 3 | 10 | OE871NBE |
| OPE 80-3 CM | 35 | 16.5 | 17 - 30 | 144 | 1.03 | 3 | 10 | OE872NCE |
| OPE 90-3 CM | 40 | 21 | 31 - 52 | 186 | 1.35 | 3 | 10 | OE873NDE |
| OPE 105-3 CM | 45 | 22 | 42 - 76 | 237 | 2.17 | 3.5 | 10 | OE874NEE |
| OPE 110-3 CM | 55 | 25 | 68 - 110 | 383 | 3 | 3 | 10 | OE879NLE |
| OPE 125-3 CM | 65 | 29 | 78 - 182 | 471 | 4 | 4 | 10 | OE875NFE |
| OPE 175-3 CM | 75 | 37 | 81 - 180 | 589 | 6.9 | 3 | 10 | OE876NGE |
| OPE 205-3 CM | 80 | 40 | 88 - 148 | 882 | 12.8 | 3 | 10 | OE877NHE |

| CODE | A | B | True clamping force per jaw only with spring - N | Total true clamping force per jaw to 6 bar N (with closed gripper) | Weight Kg | Min pressure bar | Max pressure bar | ARTICLE CODE |
|--------------|----|------|--|--|-----------|------------------|------------------|--------------|
| OPE 60-3 CM | 30 | 14 | 15 - 19 | 96 | 0.67 | 3 | 10 | OE870NRE |
| OPE 65-3 CM | 35 | 16.5 | 20 - 30 | 147 | 0.78 | 3 | 10 | OE871NBE |
| OPE 80-3 CM | 35 | 16.5 | 17 - 30 | 144 | 1.03 | 3 | 10 | OE872NCE |
| OPE 90-3 CM | 40 | 21 | 31 - 52 | 186 | 1.35 | 3 | 10 | OE873NDE |
| OPE 105-3 CM | 45 | 22 | 42 - 76 | 237 | 2.17 | 3.5 | 10 | OE874NEE |
| OPE 110-3 CM | 55 | 25 | 68 - 110 | 383 | 3 | 3 | 10 | OE879NLE |
| OPE 125-3 CM | 65 | 29 | 78 - 182 | 471 | 4 | 4 | 10 | OE875NFE |
| OPE 175-3 CM | 75 | 37 | 81 - 180 | 589 | 6.9 | 3 | 10 | OE876NGE |
| OPE 205-3 CM | 80 | 40 | 88 - 148 | 882 | 12.8 | 3 | 10 | OE877NHE |

| BEZEICHNUNG | A | B | Reele Schliesskraft pro Backe nur mit Feder - N | Reele Gesamtschliesskraft pro Backe (mit geschlossenen Greifer 6 bar - N) | Gewicht Kg | Min Druck bar | Max Druck bar | ARTIKEL CODE |
|--------------|----|------|---|---|------------|---------------|---------------|--------------|
| OPE 60-3 CM | 30 | 14 | 15 - 19 | 96 | 0.67 | 3 | 10 | OE870NRE |
| OPE 65-3 CM | 35 | 16.5 | 20 - 30 | 147 | 0.78 | 3 | 10 | OE871NBE |
| OPE 80-3 CM | 35 | 16.5 | 17 - 30 | 144 | 1.03 | 3 | 10 | OE872NCE |
| OPE 90-3 CM | 40 | 21 | 31 - 52 | 186 | 1.35 | 3 | 10 | OE873NDE |
| OPE 105-3 CM | 45 | 22 | 42 - 76 | 237 | 2.17 | 3.5 | 10 | OE874NEE |
| OPE 110-3 CM | 55 | 25 | 68 - 110 | 383 | 3 | 3 | 10 | OE879NLE |
| OPE 125-3 CM | 65 | 29 | 78 - 182 | 471 | 4 | 4 | 10 | OE875NFE |
| OPE 175-3 CM | 75 | 37 | 81 - 180 | 589 | 6.9 | 3 | 10 | OE876NGE |
| OPE 205-3 CM | 80 | 40 | 88 - 148 | 882 | 12.8 | 3 | 10 | OE877NHE |

| SIGLE | A | B | Force réelle en fermeture par griffe seulement avec ressort - N | Totale force réelle en fermeture par griffe 6 bar N (avec la pince fermée) | Poids Kg | Min press. bar | Max press. bar | CODE ARTICLE |
|--------------|----|------|---|--|----------|----------------|----------------|--------------|
| OPE 60-3 CM | 30 | 14 | 15 - 19 | 96 | 0.67 | 3 | 10 | OE870NRE |
| OPE 65-3 CM | 35 | 16.5 | 20 - 30 | 147 | 0.78 | 3 | 10 | OE871NBE |
| OPE 80-3 CM | 35 | 16.5 | 17 - 30 | 144 | 1.03 | 3 | 10 | OE872NCE |
| OPE 90-3 CM | 40 | 21 | 31 - 52 | 186 | 1.35 | 3 | 10 | OE873NDE |
| OPE 105-3 CM | 45 | 22 | 42 - 76 | 237 | 2.17 | 3.5 | 10 | OE874NEE |
| OPE 110-3 CM | 55 | 25 | 68 - 110 | 383 | 3 | 3 | 10 | OE879NLE |
| OPE 125-3 CM | 65 | 29 | 78 - 182 | 471 | 4 | 4 | 10 | OE875NFE |
| OPE 175-3 CM | 75 | 37 | 81 - 180 | 589 | 6.9 | 3 | 10 | OE876NGE |
| OPE 205-3 CM | 80 | 40 | 88 - 148 | 882 | 12.8 | 3 | 10 | OE877NHE |

Nota: versione con molla in chiusura, su richiesta fornibile con molla in apertura

Note: type with spring in clamping, on request available with spring in opening

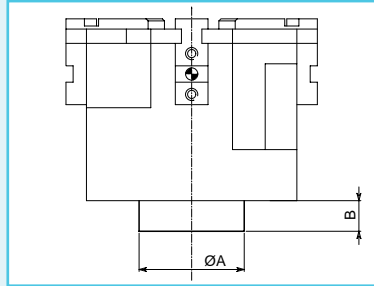
Anmerkung: Typ mit Feder in Geöfnung, nach Frage mit Feder in Öffnung

Note: type avec ressort en fermeture, sur demande ou peut le fournir avec ressort en ouverture

• Le dimensioni sono indicative e suscettibili di variazioni per migliorie tecniche. Ci riserviamo di apportare modifiche senza preavviso • All dimensions are indicative and subject to variation for technical upgrading. We reserve the right to make alterations without prior notification • Die Maßangaben sind indikativ und können sich bei technischen Verbesserungen ändern. Wir behalten uns vor, ohne vorherige Benachrichtigung Änderungen vorzunehmen • Les dimensions sont fournies à titre indicatif, elles peuvent subir des variations pour cause d'améliorations techniques. Nous nous réservons le droit d'apporter des modifications sans préavis.

• **ORGANI DI PRESA A CORSA PARALLELA A TRE GRIFFE • Three-jaw parallel grippers**
 • **3 Finger-Greiferen mit Parallelbewegung • Pincas de préhension à course parallèle, à trois griffes**

- **DISPOSITIVO DI SICUREZZA CON MOLLA**
- **Safety device with spring**
- **Sicherheits-vorrichtung mit Feder**
- **Dispositif de sécurité avec ressort**



| SIGLA | A | B | Forza reale di chiusura per griffa con sola molla - N | Forza totale reale di chiusura per griffa a 6 bar - N (a pinza chiusa) | Peso Kg | Press. min. bar | Press. max. bar | CODICE |
|---------------|----|------|---|--|---------|-----------------|-----------------|----------|
| OPE 60-3 SCM | 30 | 14 | 25 - 31 | 158 | 0.57 | 3 | 10 | OE670NRS |
| OPE 65-3 SCM | 35 | 16.5 | 40 - 60 | 290 | 0.68 | 3 | 10 | OE671NBS |
| OPE 80-3 SCM | 35 | 16.5 | 34 - 60 | 283 | 0.93 | 3 | 10 | OE672NCS |
| OPE 90-3 SCM | 40 | 21 | 62 - 102 | 366 | 1.25 | 3 | 10 | OE673NDS |
| OPE 105-3 SCM | 45 | 22 | 82 - 149 | 465 | 1.92 | 3.5 | 10 | OE674NES |
| OPE 110-3 SCM | 55 | 25 | 135 - 217 | 752 | 2.6 | 3 | 10 | OE679NLS |
| OPE 125-3 SCM | 65 | 29 | 153 - 357 | 925 | 3.25 | 4 | 10 | OE675NFS |
| OPE 175-3 SCM | 75 | 27 | 159 - 354 | 1156 | 6.4 | 3 | 10 | OE676NGS |
| OPE 205-3 SCM | 80 | 40 | 173 - 290 | 1732 | 12.3 | 3 | 10 | OE677NHS |

| CODE | A | B | True clamping force per jaw only with spring - N | Total true clamping force per jaw to 6 bar N (with closed gripper) | Weight Kg | Min pressure bar | Max pressure bar | ARTICLE CODE |
|---------------|----|------|--|--|-----------|------------------|------------------|--------------|
| OPE 60-3 SCM | 30 | 14 | 25 - 31 | 158 | 0.57 | 3 | 10 | OE670NRS |
| OPE 65-3 SCM | 35 | 16.5 | 40 - 60 | 290 | 0.68 | 3 | 10 | OE671NBS |
| OPE 80-3 SCM | 35 | 16.5 | 34 - 60 | 283 | 0.93 | 3 | 10 | OE672NCS |
| OPE 90-3 SCM | 40 | 21 | 62 - 102 | 366 | 1.25 | 3 | 10 | OE673NDS |
| OPE 105-3 SCM | 45 | 22 | 82 - 149 | 465 | 1.92 | 3.5 | 10 | OE674NES |
| OPE 110-3 SCM | 55 | 25 | 135 - 217 | 752 | 2.6 | 3 | 10 | OE679NLS |
| OPE 125-3 SCM | 65 | 29 | 153 - 357 | 925 | 3.25 | 4 | 10 | OE675NFS |
| OPE 175-3 SCM | 75 | 27 | 159 - 354 | 1156 | 6.4 | 3 | 10 | OE676NGS |
| OPE 205-3 SCM | 80 | 40 | 173 - 290 | 1732 | 12.3 | 3 | 10 | OE677NHS |

| BEZEICHNUNG | A | B | Reele Schliesskraft pro Backe nur mit Feder - N | Reele Gesamtschliesskraft pro Backe (mit geschossenen Greifer 6 bar - N) | Gewicht Kg | Min Druck bar | Max Druck bar | ARTIKEL CODE |
|---------------|----|------|---|--|------------|---------------|---------------|--------------|
| OPE 60-3 SCM | 30 | 14 | 25 - 31 | 158 | 0.57 | 3 | 10 | OE670NRS |
| OPE 65-3 SCM | 35 | 16.5 | 40 - 60 | 290 | 0.68 | 3 | 10 | OE671NBS |
| OPE 80-3 SCM | 35 | 16.5 | 34 - 60 | 283 | 0.93 | 3 | 10 | OE672NCS |
| OPE 90-3 SCM | 40 | 21 | 62 - 102 | 366 | 1.25 | 3 | 10 | OE673NDS |
| OPE 105-3 SCM | 45 | 22 | 82 - 149 | 465 | 1.92 | 3.5 | 10 | OE674NES |
| OPE 110-3 SCM | 55 | 25 | 135 - 217 | 752 | 2.6 | 3 | 10 | OE679NLS |
| OPE 125-3 SCM | 65 | 29 | 153 - 357 | 925 | 3.25 | 4 | 10 | OE675NFS |
| OPE 175-3 SCM | 75 | 27 | 159 - 354 | 1156 | 6.4 | 3 | 10 | OE676NGS |
| OPE 205-3 SCM | 80 | 40 | 173 - 290 | 1732 | 12.3 | 3 | 10 | OE677NHS |

| SIGLE | A | B | Force réelle en fermeture par griffe seulement avec ressort - N | Totale force réelle en fermeture par griffe 6 bar N (avec la pince fermée) | Poids Kg | Min press. bar | Max press. bar | CODE ARTICLE |
|---------------|----|------|---|--|----------|----------------|----------------|--------------|
| OPE 60-3 SCM | 30 | 14 | 25 - 31 | 158 | 0.57 | 3 | 10 | OE670NRS |
| OPE 65-3 SCM | 35 | 16.5 | 40 - 60 | 290 | 0.68 | 3 | 10 | OE671NBS |
| OPE 80-3 SCM | 35 | 16.5 | 34 - 60 | 283 | 0.93 | 3 | 10 | OE672NCS |
| OPE 90-3 SCM | 40 | 21 | 62 - 102 | 366 | 1.25 | 3 | 10 | OE673NDS |
| OPE 105-3 SCM | 45 | 22 | 82 - 149 | 465 | 1.92 | 3.5 | 10 | OE674NES |
| OPE 110-3 SCM | 55 | 25 | 135 - 217 | 752 | 2.6 | 3 | 10 | OE679NLS |
| OPE 125-3 SCM | 65 | 29 | 153 - 357 | 925 | 3.25 | 4 | 10 | OE675NFS |
| OPE 175-3 SCM | 75 | 27 | 159 - 354 | 1156 | 6.4 | 3 | 10 | OE676NGS |
| OPE 205-3 SCM | 80 | 40 | 173 - 290 | 1732 | 12.3 | 3 | 10 | OE677NHS |

Nota: versione con molla in chiusura, su richiesta fornibile con molla in apertura

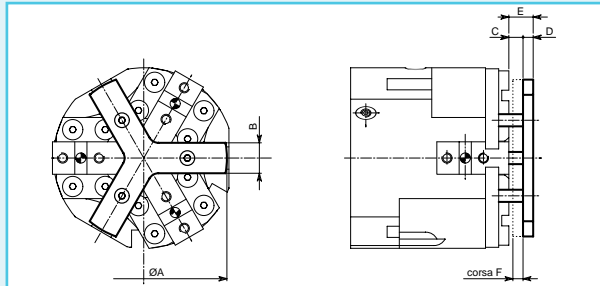
Note: type with spring in clamping, on request available with spring in opening

Anmerkung: Typ mit Feder in Geöfnung, nach Frage mit Feder in Öffnung

Note: type avec ressort en fermeture, sur demande ou peut le fournir avec ressort en ouverture

• Le dimensioni sono indicative e suscettibili di variazioni per migliorie tecniche. Ci riserviamo di apportare modifiche senza preavviso • All dimensions are indicative and subject to variation for technical upgrading. We reserve the right to make alterations without prior notification • Die Maßangaben sind indikativ und können sich bei technischen Verbesserung ändern. Wir behalten uns vor ohne vorherige Benachrichtigung Änderungen vorzunehmen • Les dimensions sont fournies à titre indicatif, elles peuvent subir des variations pour cause d'améliorations techniques. Nous nous réservons le droit d'apporter des modifications sans préavis.

- **DISPOSITIVO STABILIZZATORE PEZZO**
- **Workpiece stabilizer**
- **Vorrichtung zur Stabilisierung des Werkstückes**
- **Dispositif stabilisateur de la pièce**



| SIGLA | A | B | C | D | E | F | Forza espressa dalle molle N | Peso Kg | CODICE |
|-------------------|-----|----|---|---|----|---|------------------------------|---------|----------|
| KIST 60-3 / ...S | 53 | 11 | 6 | 4 | 10 | 4 | 8.5...17 | 0.05 | KS603ABA |
| KIST 65-3 / ...S | 63 | 13 | 6 | 4 | 10 | 4 | 9...44 | 0.06 | KS654ABB |
| KIST 80-3 / ...S | 73 | 13 | 6 | 4 | 10 | 4 | 9...44 | 0.07 | KS804ABC |
| KIST 90-3 / ...S | 82 | 15 | 7 | 5 | 12 | 5 | 18...77 | 0.10 | KS904ABD |
| KIST 105-3 / ...S | 89 | 15 | 7 | 5 | 12 | 5 | 18...77 | 0.12 | KS105ABE |
| KIST 110-3 / ...S | 98 | 19 | 7 | 6 | 13 | 5 | 36...245 | 0.18 | KS110ABF |
| KIST 125-3 / ...S | 108 | 17 | 8 | 7 | 15 | 6 | 36...245 | 0.20 | KS125ABG |
| KIST 175-3 / ...S | 138 | 20 | 8 | 7 | 15 | 6 | 162...439 | 0.30 | KS175ABH |
| KIST 205-3 / ...S | 173 | 24 | 8 | 8 | 16 | 6 | 162...439 | 0.45 | KS205ABI |

| CODE | A | B | C | D | E | F | Force expressed by springs N | Weight Kg | ARTICLE CODE |
|-------------------|-----|----|---|---|----|---|------------------------------|-----------|--------------|
| KIST 60-3 / ...S | 53 | 11 | 6 | 4 | 10 | 4 | 8.5...17 | 0.05 | KS603ABA |
| KIST 65-3 / ...S | 63 | 13 | 6 | 4 | 10 | 4 | 9...44 | 0.06 | KS654ABB |
| KIST 80-3 / ...S | 73 | 13 | 6 | 4 | 10 | 4 | 9...44 | 0.07 | KS804ABC |
| KIST 90-3 / ...S | 82 | 15 | 7 | 5 | 12 | 5 | 18...77 | 0.10 | KS904ABD |
| KIST 105-3 / ...S | 89 | 15 | 7 | 5 | 12 | 5 | 18...77 | 0.12 | KS105ABE |
| KIST 110-3 / ...S | 98 | 19 | 7 | 6 | 13 | 5 | 36...245 | 0.18 | KS110ABF |
| KIST 125-3 / ...S | 108 | 17 | 8 | 7 | 15 | 6 | 36...245 | 0.20 | KS125ABG |
| KIST 175-3 / ...S | 138 | 20 | 8 | 7 | 15 | 6 | 162...439 | 0.30 | KS175ABH |
| KIST 205-3 / ...S | 173 | 24 | 8 | 8 | 16 | 6 | 162...439 | 0.45 | KS205ABI |

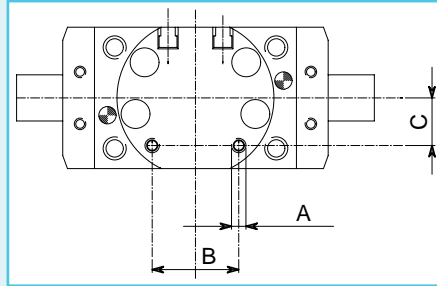
| BEZEICHNUNG | A | B | C | D | E | F | Kraft der federn N | Gewicht Kg | ARTIKELCODE |
|-------------------|-----|----|---|---|----|---|--------------------|------------|-------------|
| KIST 60-3 / ...S | 53 | 11 | 6 | 4 | 10 | 4 | 8.5...17 | 0.05 | KS603ABA |
| KIST 65-3 / ...S | 63 | 13 | 6 | 4 | 10 | 4 | 9...44 | 0.06 | KS654ABB |
| KIST 80-3 / ...S | 73 | 13 | 6 | 4 | 10 | 4 | 9...44 | 0.07 | KS804ABC |
| KIST 90-3 / ...S | 82 | 15 | 7 | 5 | 12 | 5 | 18...77 | 0.10 | KS904ABD |
| KIST 105-3 / ...S | 89 | 15 | 7 | 5 | 12 | 5 | 18...77 | 0.12 | KS105ABE |
| KIST 110-3 / ...S | 98 | 19 | 7 | 6 | 13 | 5 | 36...245 | 0.18 | KS110ABF |
| KIST 125-3 / ...S | 108 | 17 | 8 | 7 | 15 | 6 | 36...245 | 0.20 | KS125ABG |
| KIST 175-3 / ...S | 138 | 20 | 8 | 7 | 15 | 6 | 162...439 | 0.30 | KS175ABH |
| KIST 205-3 / ...S | 173 | 24 | 8 | 8 | 16 | 6 | 162...439 | 0.45 | KS205ABI |

| SIGLE | A | B | C | D | E | F | Force exprimée par les ressorts N | Poids Kg | CODE ARTICLE |
|-------------------|-----|----|---|---|----|---|-----------------------------------|----------|--------------|
| KIST 60-3 / ...S | 53 | 11 | 6 | 4 | 10 | 4 | 8.5...17 | 0.05 | KS603ABA |
| KIST 65-3 / ...S | 63 | 13 | 6 | 4 | 10 | 4 | 9...44 | 0.06 | KS654ABB |
| KIST 80-3 / ...S | 73 | 13 | 6 | 4 | 10 | 4 | 9...44 | 0.07 | KS804ABC |
| KIST 90-3 / ...S | 82 | 15 | 7 | 5 | 12 | 5 | 18...77 | 0.10 | KS904ABD |
| KIST 105-3 / ...S | 89 | 15 | 7 | 5 | 12 | 5 | 18...77 | 0.12 | KS105ABE |
| KIST 110-3 / ...S | 98 | 19 | 7 | 6 | 13 | 5 | 36...245 | 0.18 | KS110ABF |
| KIST 125-3 / ...S | 108 | 17 | 8 | 7 | 15 | 6 | 36...245 | 0.20 | KS125ABG |
| KIST 175-3 / ...S | 138 | 20 | 8 | 7 | 15 | 6 | 162...439 | 0.30 | KS175ABH |
| KIST 205-3 / ...S | 173 | 24 | 8 | 8 | 16 | 6 | 162...439 | 0.45 | KS205ABI |

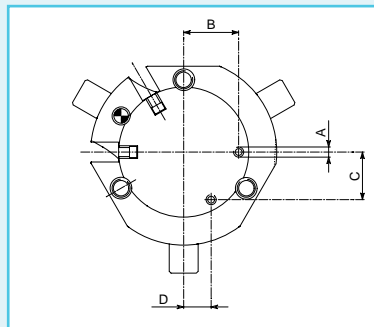
• Le dimensioni sono indicative e suscettibili di variazioni per migliorie tecniche. Ci riserviamo di apportare modifiche senza preavviso • All dimensions are indicative and subject to variation for technical upgrading. We reserve the right to make alterations without prior notification • Die Maßangaben sind indikativ und können sich bei technischen Verbesserungen ändern. Wir behalten uns vor, ohne vorherige Benachrichtigung Änderungen vorzunehmen • Les dimensions sont fournies à titre indicatif, elles peuvent subir des variations pour cause d'améliorations techniques. Nous nous réservons le droit d'apporter des modifications sans préavis.

• **ORGANI DI PRESA A CORSA PARALLELA A TRE GRIFFE OPE** • **Three-jaw parallel grippers OPE**
 • **Drei-finger Parallelgreifer OPE** • **Pinces de préhension à course parallèle, à trois griffes OPE**

• **ALIMENTAZIONE ASSIALE**
 • **Axial feed**
 • **Achsenrechte Zufuhr**
 • **Alimentation axiale**



| Sigla Code Bezeichnung Sigle | A | B | C | Codice Article code Artikelcode Code article | Sigla Code Bezeichnung Sigle | A | B | C | Codice Article code Artikelcode Code article |
|---------------------------------------|----|----|------|---|---------------------------------------|----|----|------|---|
| OPE 50 X | M3 | 17 | 10.5 | OE770PXA | OPE 50 SX | M3 | 17 | 10.5 | OE970PXM |
| OPE 60 X | M3 | 19 | 12.6 | OE771PXB | OPE 60 SX | M3 | 19 | 12.6 | OE971PXN |
| OPE 70 X | M3 | 19 | 12.6 | OE772PXC | OPE 70 SX | M3 | 19 | 12.6 | OE972PXO |
| OPE 80 X | M3 | 22 | 14.5 | OE773PXD | OPE 80 SX | M3 | 22 | 14.5 | OE973PXP |
| OPE 95 X | M3 | 30 | 16.5 | OE774PXE | OPE 95 SX | M3 | 30 | 16.5 | OE974PXQ |
| OPE 100 X | M4 | 53 | 30 | OE779PXF | OPE 100 SX | M4 | 53 | 30 | OE979PXR |
| OPE 115 X | M4 | 35 | 21 | OE775PXG | OPE 115 SX | M4 | 35 | 21 | OE975PXS |
| OPE 160 X | M4 | 50 | 28 | OE776PXH | OPE 160 SX | M4 | 50 | 28 | OE976PXT |
| OPE 190 X | M4 | 60 | 27.5 | OE777PXI | OPE 190 SX | M4 | 60 | 27.5 | OE977PXU |
| OPE 210 X | M5 | 68 | 35 | OE778PXL | OPE 210 SX | M5 | 68 | 35 | OE978PXV |



| Sigla Code Bezeichnung Sigle | A | B | C | D | Codice Article code Artikelcode Code article | Sigla Code Bezeichnung Sigle | A | B | C | D | Codice Article code Artikelcode Code article |
|---------------------------------------|----|------|------|-------|---|---------------------------------------|----|------|------|-------|---|
| OPE 60-3 X | M3 | 20 | 17.3 | 10 | OE870PXA | OPE 60-3 SX | M3 | 20 | 17.3 | 10 | OE670PXL |
| OPE 65-3 X | M3 | 24 | 20.8 | 12 | OE871PXB | OPE 65-3 SX | M3 | 24 | 20.8 | 12 | OE671PXN |
| OPE 80-3 X | M3 | 24 | 20.8 | 12 | OE872PXC | OPE 80-3 SX | M3 | 24 | 20.8 | 12 | OE672PXO |
| OPE 90-3 X | M3 | 30 | 26 | 15 | OE873PXD | OPE 90-3 SX | M3 | 30 | 26 | 15 | OE673PXP |
| OPE 105-3 X | M3 | 32.5 | 28.1 | 16.25 | OE874PXE | OPE 105-3 SX | M3 | 32.5 | 28.1 | 16.25 | OE674PXP |
| OPE 110-3 X | M4 | 38 | 32.9 | 19 | OE879PXF | OPE 110-3 SX | M4 | 38 | 32.9 | 19 | OE679PXQ |
| OPE 125-3 X | M4 | 41 | 35.5 | 20.5 | OE875PXG | OPE 125-3 SX | M4 | 41 | 35.5 | 20.5 | OE675PXR |
| OPE 175-3 X | M4 | 46.5 | 40.3 | 23.25 | OE876PXH | OPE 175-3 SX | M4 | 46.5 | 40.3 | 23.25 | OE676PXS |
| OPE 205-3 X | M5 | 57.5 | 49.8 | 28.75 | OE877PXI | OPE 205-3 SX | M5 | 57.5 | 49.8 | 28.75 | OE677PXT |

• Le dimensioni sono indicative e suscettibili di variazioni per migliori tecniche. Ci riserviamo di apportare modifiche senza preavviso • All dimensions are indicative and subject to variation for technical upgrading. We reserve the right to make alterations without prior notification • Die Maßangaben sind indikativ und können sich bei technischen Verbesserung ändern. Wir behalten uns vor, ohne vorherige Benachrichtigung Änderungen vorzunehmen • Les dimensions sont fournies à titre indicatif, elles peuvent subir des variations pour cause d'améliorations techniques. Nous nous réservons le droit d'apporter des modifications sans préavis.



- **NOTE**
- **Notes**
- **Anmerkungen**
- **Notes**

